

# PRINCE OF WALES PRIMARY SCHOOL

Newsletter  
22<sup>nd</sup> March 2024

Dear Parents/Carers, Governors and Friends,

As the Spring Term is coming to a close, we are going to also say goodbye to two members of staff who have worked with children and families across the school. Firstly Mrs Jones, who has been at PoW since 1999 and is especially well known to families for helping families to improve their children's attendance. Among her myriad of other jobs, she supported the school with assessment, the KS1 library and ensuring the school foyer was a welcoming area. Chef Len will also be leaving to continue with catering company STIR as a senior chef. I am grateful for their contributions to our school and wish them the very best.

## Help your child to read by [Turning on the Subtitles](#)

Turning on quality subtitles means your child will read a staggering number of words. Put them on and your child will read the equivalent number of words that are in all the Harry Potter books, all of the Lord of the Rings, all of the Chronicles of Narnia and everything Roald Dahl wrote, combined! Research has shown that it can double the chance of your child leaving school as a proficient reader. You can turn them on for the whole family or most streaming services will now allow you to do it just for children's profiles. Perhaps, after all, there *is* a magic button...



## Prince of Wales - School Street on Salisbury Road

The planters and signage have been installed this week. Installation of the cameras and their supporting infrastructure is scheduled for w/c Monday 22 April 2024. Once live, the School Street will operate between 8.30am to 9.00am and 3.00pm to 3.30pm. Further information on School Streets and how they operate can be found at [letstalk.enfield.gov.uk/schoolstreets](http://letstalk.enfield.gov.uk/schoolstreets) Please contact the school office if you are a Blue Badge holder as you are exempt and can enter the school street.

Mr Jan M Bless  
Headteacher



Children, look  
your best for  
Class Photos  
Monday  
25<sup>th</sup> March

## Attendance for week beginning 18<sup>th</sup> March 2024

|              |           |           |           |           |           |           |
|--------------|-----------|-----------|-----------|-----------|-----------|-----------|
| Ash 89.20%   | 1B 92.70% | 2C 87.40% | 3F 91.00% | 4A 91.90% | 5G 91.40% | 6C 96.00% |
| Birch 90.80% | 1G 93.10% | 2F 93.10% | 3H 99.30% | 4L 93.70% | 5H 99.30% | 6D 95.00% |
| Oak 97.20%   | 1S 92.60% | 2G 95.80% | 3S 97.00% | 4T 93.70% | 5W 96.40% | 6F 95.20% |

Well done to **Oak, 2G, 3H, 3S, 5H, 5W, 6C, 6D** and **6F** with attendance above 95%.

Overall attendance since September 2023: **93.49%**

## SCHOOL YEAR 2023/2024 – upcoming dates



| DATE   | YEAR                | EVENT  |
|--|---------------------|--|
| Mon 25 <sup>th</sup> March                   | all                 | Class Photos   |
| Wed 27 <sup>th</sup> March                   | all                 | Last day Nursery before breaking up for Easter Break   |
| Thu 28 <sup>th</sup> March                   | Reception, KS1, KS2 | Certificate Assemblies – Y4,5,6 9:00am – Y1,2,3 10:00am<br>Half Day, school finishes at 1:30pm |
| Fri 29/03/24 –<br>Fri 12 <sup>th</sup> April | all                 | Easter Holidays – school closed  |
| Wed 17 <sup>th</sup> April                   | Y6                  | Year 6 SATs meeting for parents 3:30pm in Community Room                                       |
| Wed 23 <sup>rd</sup> April                   | all                 | Parent Forum 2:45pm in Community Room  |
| Mon 6 <sup>th</sup> May                      | all                 | May Bank Holiday – school closed   |
| 27/05/24 – 31/05/24                          | all                 | Summer Half Term Break – school closed   |
| Wed 5 <sup>th</sup> June                     | all                 | Parent Forum 8:55am in Community Room  |
| Mon 10 <sup>th</sup> June                    | Y1-6                | M&M Theatre production The Railway Children  |
| Mon 17 <sup>th</sup> June                    | all                 | INSET DAY – School Closed  |
| Mon24 – Wed 26 June                          | Y6                  | Residential Visit  |
| Thu 11 <sup>th</sup> July                    | Y2                  | Seaside visit  |
| Fri 12 <sup>th</sup> July                    | KS1 & KS2           | Sports Day & Picnic  |
| Tue 16 <sup>th</sup> July                    | all                 | Summer celebration & PoW Carnival Parade   |
| Thu 18 <sup>th</sup> July                    | Y6                  | Year 6 Disco   |
| Mon 22 <sup>nd</sup> July                    | all                 | Parents' Evening   |
| Tue 23 <sup>rd</sup> July                    | Nursery<br>all      | Final School Day for Nursery<br>Year group end of term celebrations                            |
| Wed 24 <sup>th</sup> July                    | Y6<br>all           | Year 6 Leavers assembly 11am<br>Half Day - finish at 1:30pm                                    |

### Easter Crafts Challenge

Instead of the traditional Easter Bonnet Parade, we invite all children to be creative and bring to school a home-made Easter-themed craft by Wednesday 27<sup>th</sup> March. SLT will judge the creations with one winner per class taking home an extra special Easter Egg!



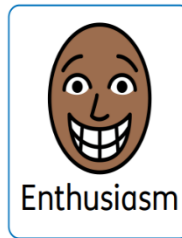


In March we focus on  
**ENTHUSIASM**



These pupils received a certificate this week:

Harper 1B, Mason 1G, Marina 1S, Samuel 2C, Cain 2F, Josiah 2G, Oliver 3F, Anela 3H, Ali 3S, Ailon 4A, Miran 4L, Alyssa 4T, Natalie 5G, Halil 5H, Oliver 5W, Cagan 6C, Cem 6D & Nevaeh 6F



Class 4A is the next lucky recipient of our travelling library.



We commend upstander behaviour that makes our playground a pleasant experience for everyone.



 access

**PARENTS:**

**Help your child**

**become a better reader.**

**Turn on**

**the Subtitles**

**when they're watching TV!**



**Did you know that by turning on the subtitles whilst your child watches TV you can double the chances of your child becoming good at reading.**

So, the next time your child is watching TV or tablet, turn on the subtitles and help them become a better reader! It's that simple!



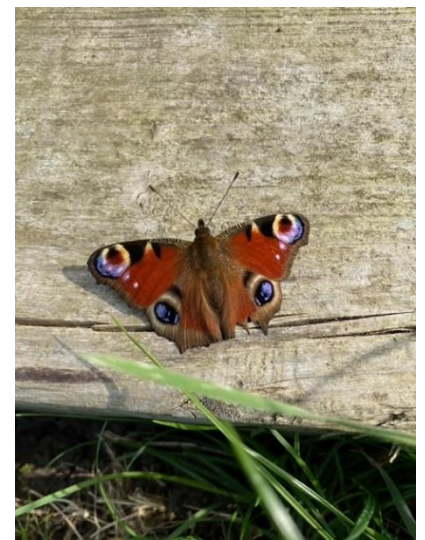
## *From our Gardeners*

**21<sup>st</sup> April - first day of Spring 2024**

We spotted the first butterfly of the year (left) in the new Woodlands garden - it was perched on the edge of our new wildflower meadow area 😊

It is called a Comma butterfly 🦋

[Comma | Butterfly Conservation \(butterfly-conservation.org\)](https://butterfly-conservation.org)



Next, we were treated to this Peacock butterfly (right) that also emerged from its dormant state.

<https://butterfly-conservation.org/search?query=peacock>



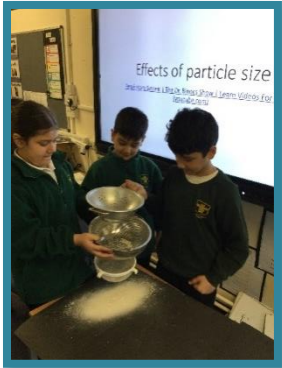


# Reception

This week, Reception children helped plant seeds with our gardeners in our EYFS garden. We planted Dwarf beans, broad beans, giant radish and chard! The children each had a go at adding the seeds and covering them with soil. We spoke about what they will need to grow and we watered them!







# Year 4

8-17 March  
British Science Week 2024



One of the experiments we carried out in year 4, examined how particles affect our respiratory system and we looked at how our body protects itself from them.



**EFFECT OF PARTICLE SIZE!**

In this activity, you'll explore how different-sized particles interact with our respiratory system, using a fun, hands-on model to simulate how we breathe in and filter the air around us.

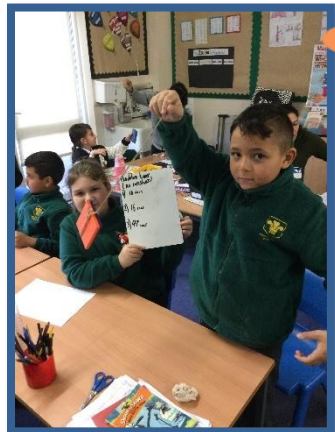
30 minutes

## SUPER POWER: Measuring Time! WATER CLOCK

In 4A we have used the power of water to make our own water clocks and calculate how much time has passed. Did you know that the oldest water clocks were made over 4000 years ago in ancient India, China and Persia?



Make Your Own Water Clock



In 4L, we created pendulum timers to discuss how quickly, or slowly they can swing with no resistance. We then attached pieces of card, that were different sizes, to see if air resistance would have any effect on the swinging motions.



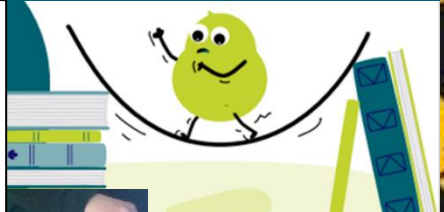




# BRIDGE BLUNDER

**How does the shape of the paper affect the amount of weight a bridge can support?**

Children in year 5 were given five pieces of A4 paper with the task of building a bridge. They had to consider how to make paper more suitable for building a bridge.



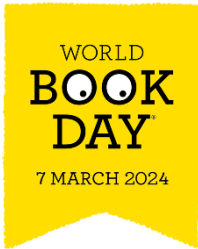
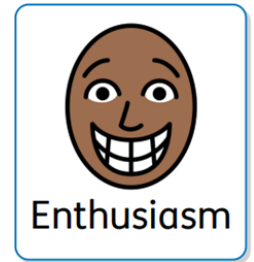
The **independent** variable was the shape of the bridge. The children tested which shaped bridges were the strongest (could hold the most weight).

The **dependent** variable was the amount of weight the bridge could hold. They kept the test fair by using the same size paper, same amount of paper, distance apart. Some children rolled the paper, some children folded the paper. They then considered how to place the weights (in the middle or spread out). The rolled bridges were harder to bend. Folding the paper made more layers of paper so that made it stronger too. Bridges with vertical walls were significantly stronger because the walls were difficult to bend. The folded sides make the bridges less flexible and therefore capable of holding more weight.



## March Family Home-learning Project

Our school value for the month of March is enthusiasm and there are lots of events to get excited about! Enthusiasm is all about showing an interest, getting excited and finding something you enjoy. This month, our project is linked to World Book Day and British Science Week.



### World Book Day

As a school, we will be celebrating on the 7<sup>th</sup> March with a day full of sharing stories and books. Over the month, see how many new and exciting books you can read. You can also get adventurous with your reading and **take a photo** of you reading in an unusual place and share it with us...



10-19 March  
British  
Science  
Week  
2023



Science is all around us! In the things that grow, in the reversible and irreversible changes that take place when we cook, in the different materials and electricity we use in our homes and in push, pull and twist forces we use on a daily basis.

How many different ways can you see Science in action this month?

- Keep a record of the different ways you see Science in action
- Create a small experiment at home, take photos or draw pictures/diagrams and record your results
- Record observations in a table to show something changing over time
- Create a poster of science in action in your home
- Write a speech and record yourself talking about your favourite topic in science – even if it isn't something you are currently learning about!



Share your Enthusiasm projects about Reading and Science with us by the **28th March**





**Double the chances**

**of your child becoming**

**a better reader, simply**

**Turn on**



**the Subtitles**

Dear Parents,

**Did you know that by turning on the subtitles whilst your child watches TV you can double the chances of your child becoming good at reading?**

So, the next time your child is watching TV, there could be an opportunity to improve their reading skills at the same time!

**Does turning on the subtitles actually work?**

Yes, this simple change boosts kids' reading ability and has solid evidence behind it. TOTS research shows that children generally do read captions when they're available and that the mere presence of the words at the bottom of the screen will encourage children to read, automatically improving reading levels and enhancing spelling, grammar and vocabulary.

**How to help your child...**

All you have to do is turn on the subtitles during TV or tablet time. It's that simple!

You can also share this message with friends, family, and anyone in your network who has children or works with them. This quick and free tip can effortlessly turn TV time into valuable reading time.

And, over the course of the next few weeks, we'll also be sending home some fun homework activities to help your children understand why its so important to turn on the subtitles.

Best Regards,







## Strengthening Families Strengthening Communities (SFSC) TURKISH Course for Parents-Carers

SFSC is an inclusive evidence-based parenting programme developed by the Race Equality Foundation and is designed to promote protective factors associated with good parenting and better outcomes for children in all communities.

Enfield has partnered with Minik Kardeş to deliver SFSC to Turkish; Kurdish Turkish Cypriot and Bulgarian Turkish parents/carers living in Enfield.

### This 13-week course will be delivered in Turkish and includes:

- Different approaches to parenting
- The process of positive discipline
- Childhood characteristics and information on developmental stages
- Importance of identity, culture, and traditions
- Improving parent-child relationship



**When?:** Mondays 9.30-12.30 15 April- 22 July 2024

**Who is it for?:** Turkish and Kurdish speaking parents of children aged birth to 18 years

**Where?:** Pymmes Park Visitor's Centre, Victoria Road, London N18 2UF

Certificates will be given to everyone who completes the course / Refreshments and light snacks will be provided / Creche is available.

**How to Book?:** self-referral / Referral from professionals email for referral form

**Contact information:** For more information, contact Sevil Kotan  
Tel: 020 7923 7226 or 07792202108 E-mail: [s.kotan@minikkardes.org.uk](mailto:s.kotan@minikkardes.org.uk)



@minikkardes



## Aileleri Güçlendirmek, Toplulukları Güçlendirmek (SFSC) Türkçe Ebeveyn-Koruyucu Kursu

SFSC, ırk eşitliği temelinde geliştirilmiş kanıt dayalı bir ebeveynlik programıdır ve tüm topluluklardaki çocuklar için iyi ebeveynlik ve daha iyi sonuçları teşvik etmek amacıyla tasarlanmıştır.

Enfield, Türk, Kürt Türk Kıbrıslı ve Bulgar Türk ebeveynlerin/koruyucuların yaşadığı Enfield'deki Türkçe SFSC kursunu sunmak için Minik Kardeş ile işbirliği yapmıştır.

### Bu 13 haftalık kurs Türkçe olarak sunulacak ve şunları içerecektir:

- Ebeveynlik için farklı yaklaşımlar
- Pozitif disiplin süreci
- Çocukluk özellikleri ve gelişim aşamalarıyla ilgili bilgiler
- Kimlik, kültür ve geleneklerin önemi
- Ebeveyn-çocuk ilişkisinin geliştirilmesi



**Ne Zaman?:** Pazartesi 9.30-12.30 15 Nisan- 22 Temmuz 2024

**Kimler için?:** 0-18 yaş arası çocukları olan Türkçe ve Kürtçe konuşan ebeveynler

**Nerede?:** Pymmes Park Ziyaretçi Merkezi, Victoria Yolu, Londra N18 2UF

Kursu tamamlayan herkese sertifikalar verilecektir. Ayrıca, atıştırmalıklar ve içecekler sunulacak, kreş hizmeti de sağlanacaktır.

**Nasıl Kayıt Olunur?:** Kendi kendine kayıt / yönlendirme formu talebi

**Contact information:** For more information, contact Sevil Kotan  
Tel: 020 7923 7226 or 07792202108 E-mail: [s.kotan@minikkardes.org.uk](mailto:s.kotan@minikkardes.org.uk)



@minikkardes



## DO YOU KNOW WHAT APPS THEY USE?

### WELCOME TO THE WORLD OF APPS

Below is a selection of apps that are all free to download.  
Some are incredibly popular, some are incredibly dangerous.

THE MORE YOU KNOW - THE BETTER

Find out about the APPS your child uses on - [KIDSONLINEWORLD.COM](http://KIDSONLINEWORLD.COM)

# ReMARKable Art

invites you to...

Celebrate the artistic works of ETSP schools at our Finale Exhibition showcasing pupils' interpretation of *Growth* using Clay, Print, Drawing and Painting.

**Thursday, 18th April 2024**

**Open to the local community 4pm—7pm**

**Venue:** Prince of Wales Primary School, Salisbury Rd, EN3 6HQ

**[RSVP here](#)\***

**ETSP's Pupil Project  
Celebratory Finale  
Exhibition!**



\*email [Debbie@etsplondon.org](mailto:Debbie@etsplondon.org) if you are unable to access this link



# Creative writing: writing for wellbeing

**Where:** Online  
**When:** Tue 16/04/2024 - Tue 21/05/2024  
**How Long:** 6 sessions  
**Time:** 3:30pm - 5:30pm  
**Reference:** Q00014024  
**Cost:** Free

On this course, you will learn how to use poems as prompts to life writing in poetry or prose and be given the opportunity to share your writing and experiences with others. We will be using prompts for writing on gratitude, awareness, nature and hope. During the course, you don't have to worry about your handwriting, spelling or punctuation. You are writing for yourself and there is no right or wrong way of doing so. It is not about the finished product but the calming process of just writing itself, which allows you to find clarity, space and a moment of relaxation. Anyone can do it. If you can write, you can write creatively.

Start your journey today



# Award in Support Work in Schools and Colleges Level 2

**Where:** Online  
**When:** 21.03.24 - 19.07.24  
**How Long:** 30 sessions  
**Time:** 12.30am - 3.30pm  
**Reference:** Q00014435  
**Cost:** Free to £225.00

If you enjoy the buzz of learning environments, this qualification can teach you key skills for employment in a school or college. This government-funded course prepares you for a variety of roles. It provides the basic skills and knowledge necessary to work in admin, technical, or support roles in a learning environment. Studying support work in schools at level 2 can be a first step towards working with kids in teaching positions. It also provides you with the qualifications needed to work in admin at schools. No matter what role you're interested in, this course can teach you skills for employability in schools and colleges.

Start your journey today



Find out more:

Simply visit [thewea.info/findmycourse](http://thewea.info/findmycourse) or call 01132 002194

**WEA** Adult Learning Within Reach



Scan this QR code to book online, using a smartphone or tablet.

If you receive certain benefits you may be entitled to a free course.

The WEA is a charity registered in England and Wales (no. 1112775) and in Scotland (no. SC039293).



Enfield Town  
**Schools' Partnership**

Working together, stronger together

# Schools, Parenting and Child Development: Introduction to SEND

**Where:** Online  
**When:** 19.04.24 - 07.06.24  
**How Long:** 7 sessions  
**Time:** 9:30am - 11:30am  
**Reference:** Q00014434  
**Cost:** Free to £51.80

This short course will introduce you to what is meant by special educational needs and disabilities (SEND). The course will provide an initial understanding of the spectrum of autistic disorders and how they can affect people in a variety of ways, as well as exploring the importance of a person-centred approach to provide support. It's important to be aware of the range of special needs you can encounter when dealing with others. Special needs education courses can help you understand what to expect and how to support all learning needs.

Start your journey today



Find out more:

Simply visit [thewea.info/findmycourse](http://thewea.info/findmycourse) or call 01132 002194

**WEA** Adult Learning Within Reach



Scan this QR code to book online, using a smartphone or tablet.

If you receive certain benefits you may be entitled to a free course.

The WEA is a charity registered in England and Wales (no. 1112775) and in Scotland (no. SC039293).



LOL Bear Theatre Company and  
The Noise Arts Festival present

FREE

AN  
**Easter**  
SHOW FOR CHILDREN



**SAT 13TH APRIL 2024**

**2.00PM (DOORS OPEN AT 1.40PM)**

**An interactive musical, comedy telling of the Easter  
Story where the children are the stars of the show!**

Totteridge Road Baptist Church,  
45a Totteridge Road, Enfield, EN3 6NF  
More info: 07557443826 | [www.trbchurch.org.uk](http://www.trbchurch.org.uk)





# WALKER CHILDREN'S CLUB

play learn grow

## After School Club

Prince of Wales Primary School



**Badminton**

**Open Monday - Friday  
from 3pm - 5:45pm**

**Short and last minute  
emergency sessions  
available!**



**Sensory Area**

*"It's fun! You get to make new friends,  
you get to play outside and there is  
lots of things to do"*

**- Child**



**Arts & Crafts**  
+ many more fun  
activities!

*"My child enjoys her time at the After  
School Club and I love the variety of  
choices for activities"*

**- Parent**

**Later collection now available - until 6 pm!**

\*£20 membership fee applicable, £10 for new families\*

Please visit our website or get in touch to book!

**[www.walkerchildrensclub.com](http://www.walkerchildrensclub.com)**

**07561 810910 | [admin@walkerchildrensclub.com](mailto:admin@walkerchildrensclub.com)**

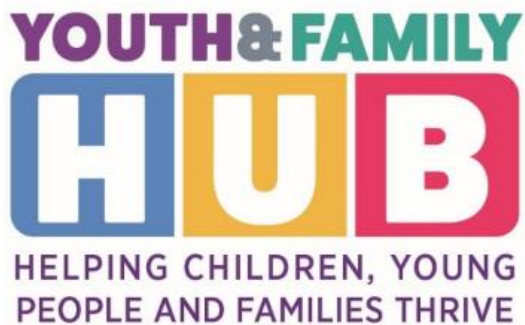
# Craig Park Youth & Family Hub

2 Lawrence Road, N18 2HN

[craigparkfamilyhub@enfield.gov.uk](mailto:craigparkfamilyhub@enfield.gov.uk)

Craig Park Youth & Family Hub brings together lots of different services for children and families, making it easier for families to get the help they need at the right time. We offer help and support for families, from pregnancy up until age 19, or 25 for young people with special educational needs and disabilities.

Our Youth and Family Hubs provide support for any family, child or young person living in Enfield who needs them. Our doors are open to everyone, ensuring that families get the help and support they need. There is a Family Navigator at the hub to support families to access information, advice, and services.



- Our Voice: advice & support for parents/ carers of children & young people with SEND (0-25)
- ABC Parents: First Aid for parents/ carers
- Family Support (drop-in) Monday to Friday
- Antenatal Health Checks: Community Midwifery Team
- Domestic abuse support & advice: Solace (drop-in)
- Perinatal Mental Health
- 1-to-2-year-old reviews: Health Visitor Service
- Employment & Welfare Benefit Advice & Support
- Postnatal Health Checks: Community Midwifery Team
- Youth Centre activities Evenings Monday to Sunday
- Parenting Programmes
- Breast feeding support – Starting soon



Scan the Craig Park QR code for details of the latest activities

# How can I help improve my child's literacy?

---

1

## Turn On The Subtitles

Turn on  
the Subtitles

When children watch TV or a device with the subtitles switched on, they can double their chance of leaving school a great reader.

2

## Don't stop reading to your child.

Reading to your child til the age of 13/14 still has huge benefits as it allows them to focus on the complex vocabulary and ideas in the story.

3

## For the reluctant reader - read anything!

Any form of reading in a topic they are interested in and in any format counts!

Did you know you can download lots of old comics for free at [www.digitalcomicmuseum.com](http://www.digitalcomicmuseum.com)?

4

## Try free electronic books from your Library service

Reading online can also offer you options to increase font size, change background colours - all of which can impact readability.

[www.oxfordowl.co.uk](http://www.oxfordowl.co.uk) also has lots of free eBooks for children age 3 - 11.

5

## How about turning reading into a game?

NightZooKeeper.com keeps children interested using fun, engaging games and provides parents personalised reports on how it's going. Note; there's a monthly fee with this one though.



Find out more at [www.turnonthesubtitles.org](http://www.turnonthesubtitles.org)  
Email us at [hello@turnonthesubtitles.org](mailto:hello@turnonthesubtitles.org)