



# PRINCE OF WALES PRIMARY SCHOOL

Newsletter  
17<sup>th</sup> December 2021

*Listening Excellence Attitude Respect Negotiate Enjoy Responsible Support*

Dear Parents/Carers, Governors and Friends,

I am grateful that our school could finish this term on a high note having been able to celebrate all planned festivities to the full. This newsletter is filled with snapshots of these.

In case you still need any help to getting into the festive spirit, it is impossible not to feel contagious joy when watching our Nursery children and adults celebrating together: [Nursery Am Christmas Performance](#) and [Nursery PM Christmas Performance](#)

Special thanks to Miss Ozminnos for skillfully putting these lovely videos together.

## Farewell and Happy Retirement

One colleague who will not be returning on Tuesday 4<sup>th</sup> January is Mrs Blake who since January 2012 has successfully seen every Year 6 cohort through their final year in primary. She leaves many happy memories and we wish her and her family the very best.

## Covid update

As you know, both Delta and Omicron variants are circulating. Omicron can infect anyone that previously had Covid-19, even if it happened in the past 90 days. It is therefore important that you get a PCR when showing any symptoms. We know that children also show runny nose and tummy ache as a symptom although these are not shown on the NHS testing website.

## Bicycles donation

Who has given our school four free adult sized bikes? Find out on page 6.

## Boardgame of the week

Shut the Box is a great mathematical game that helps younger players develop arithmetic skills whilst competing to be the first to cover all their numbers. Turn to page 7 to find out what this game is all about.

## Last chance to book free School Camp Place at our school this holiday

No cost for FSM, lots of fun activities, free hot meal - [Prince of Wales Primary school Winter Camp 2021 | School Camps](#)

## Podcast

Isabella and Varun from Year 6 discuss their work in computing with the micro:bits and how they have used them to improve their own well-being and also the environment. Many thanks to Jonathan and Mr. Sin for their help in producing this episode. *Mr Taylor, Computing Lead*

[POW Cast Episode 2 - YouTube](#)

I wish our school community a Merry Christmas and good health for 2022,

Mr Jan M Bless  
Headteacher

## Attendance this week

Ash 85.06%	1H 95.00%	2A 82.40%	3F 91.89%	4F 90.24%	5G 92.89%	6B 94.74%
Birch 84.03%	1K 90.40%	2L 86.61%	3H 96.15%	4G 93.64%	5R 82.07%	6C 96.32%
Oak 86.55%	1W 90.53%	2T 86.64%	3W 92.81%	4GI 92.86%	5T 92.27%	6T 94.00%
						6Ta 90.91%

Well done to **Oak**, **1H** and **6C** for best attendance this week.

Overall attendance since September 2021: **94.02%**

## End of Term Certificates



Certificate winners from Year 2



Minced pies on offer to parents



Our latest word millionaire: Jeremiah 6T

Class	Reading	Maths	Commitment to Learning (going above and beyond, making accelerated progress, etc.)	Quality of Homework	Contribution to the school (adhering to school values)
1H	Aras	Nathaniel	Maria	Antonia	Rebecca
1K	Jada	Ahmed	Ayaz	Amanda	Simal
1W	Alicia	Charlie	Arjela	Era	Joshua
2A	Dylan	Eliana	Sofie	Walid	Nathanael
2L	Botan	Yagmur	Priceless	Charlie	Vladi
2T	Kharnell	Jessica	Ajwa	Christie	Ali
3F	Nathan	Reggie	Anna	Macey	Aayden
3H	Caleb	Mohammad	Kirithik	Bella	Selin
3W	Kimberley	Mira	Ali	Gabi	Oliver
4F	Aras	David	Logan	Martin	Elnathan
4G	Cinar	Lily	Kezia	Ela	Yusra
4GL	Jacob	Alessandro	Mia	Sadia	Wahab
5G	Rania	Spencer	Amelia	Bernice	Sienna
5R	Sonny	Yavuz	Tia	Bethel	Emmanuela
5T	Alaa	Rehan	Humahira	Domantas	Iqra
6B	Saniyah	Varun	Eliz	Niyla	Aysema
6C	Muhammed	Sinead	Alaa	Sienna	Joe
6T	Mustafa	Nevaeh	Siloe	Zahra	Charlie
6TA	Tatiana	Sebastian	Isabella	Bejna	Olivia
Rainbow	Millie-May	Kayden	Kazim		Pixie



# TREE WEEK

## Native Trees

These trees are naturally found in the UK. Native trees are important to support our local wildlife.



1. White Willow-  
*Salix alba*  
How tall do you think the tree is?



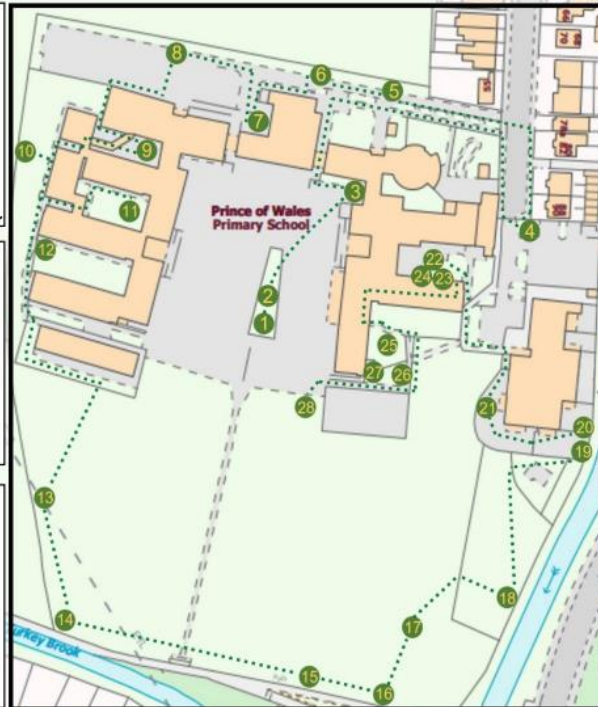
7. Hornbeam-  
*Carpinus betulus*  
If you were at the top of the tree, what would you see?



9. Bird Cherry-  
*Prunus padus*  
Why do you think it is called a **bird** cherry?



12. Elder-*Sambucus nigra*  
Is this tree evergreen?



28. Wild Cherry-  
*Prunus avium*  
What colour leaves would this tree have in Autumn?



13. Hawthorn-  
*Crataegus monogyna*  
What animals would eat the berries on this tree?



21. Silver Birch-  
*Betula pendula*  
If you have to describe this tree in one colour what would it be?



14. Small Leaved Lime-*Tilia cordata*  
Describe the size and shape of the branches.



20. Quaking Aspen-  
*Populus tremula*  
Why is this tree called a **quaking** Aspen?



16. Ash-*Fraxinus excelsior*  
What is growing around the base of this tree?



17. Oak-*Quercus robur*  
What is the fruit of the Oak tree called?



18. Field Maple-*Acer campestre*  
Describe the bark of the tree.



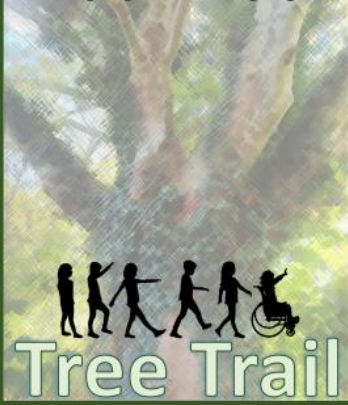
19. Beech-*Fagus sylvatica*  
Describe the leaves of the tree.

At Prince of Wales we have many, many trees. This map leads you around the school to show you 28 different species. 13 native and 15 non-native. Trees are a very important part of our environment. They help to clean our air, offer us shade, protect us from strong winds and flooding and provide food and shelter for wildlife. It is vital for our fight against climate change that we look after our trees, both at school and elsewhere.



## Prince of Wales Primary School

Learning Together, Growing Together

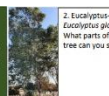


Miss Clark's vision to map all trees on our school site for a tree trail and for each class to adopt a native tree has come to fruition. Introduced during National Tree Week, the trees are now an essential part of childrens' learning through Science – our Changing World and will feature throughout the curriculum. Last week they were the source of inspiration in painting and multi-media work (see next pages). The trees are also an integral part of our climate action programme.

Many thanks to Miss Homer - Head Gardener and Mr Ferns - Outdoor Learning Lead for creating this leaflet with our new tree trail.

## Non-Native Trees

These trees have been imported over many hundreds of years. Most are not invasive and have become naturalised in our climate.



2. Eucalyptus-  
*Eucalyptus globulus*  
What parts of the tree can you see?



3. Golden false Acacia-  
*Robinia pseudoacacia*  
Why do you think it is called a **false** acacia?



4. Walnut-*Juglans regia*  
What animals do you think eat the walnuts?



6. Himalayan Birch-  
*Betula utilis*  
Where do you think this tree comes from?



8. Indian Bean Tree-  
*Catalpa bignonioides*  
Why do you think this is called a **bean** tree?



10. Sycamore-  
*Acer pseudoplatanus*  
How do you think the damage to the trunk occurred?



27. Apple-*Malus domestica*  
How many types of apples are grown in the UK?



11. Weeping Cherry-  
*Prunus pendula*  
What does the word **weeping** mean?



15. Larch-  
*Larix laricina*  
How old do you think this tree is?



22. Swedish Whitebeam-  
*Sorbus intermedia*  
You are this tree. How do you feel about children climbing you?



23. Bay Laurel-  
*Laurus nobilis*  
Do you think the leaves of this tree are edible?



24. Olive-  
*Olea europaea*  
What countries export a lot of Olives to the UK?



25. Dwarf Weeping Willow-  
*Salix integra*  
What does **dwarf** mean?



26. Pear-  
*Pyrus communis*  
Do you like pears? Why?



25. Dwarf Weeping Willow-  
*Salix integra*  
What does **dwarf** mean?



# TREE WEEK



Year 3 with their adopted tree

One of the newest trees in school.  
Do you know what type of tree it is?



KS1



Year 1 created artwork inspired by their tree

In school we have been celebrating National Tree Week. The children have had opportunities to explore and examine trees in a variety of ways.



Year 2 on the tree trail



3D artwork in creation



Year 5 were inspired to create 3D art



Year 4 tree planting



KS2



Taking part in the tree time lapse project as part of Science learning



Our school tree trail map

Year 6 studying their tree







A drawing of a tree with many branches and leaves, labeled 'Evan'. The drawing is on a piece of paper with a grid pattern. The tree has a thick trunk and many thin branches extending outwards. The leaves are simple, rounded shapes. The drawing is done in pencil or light ink. The name 'Evan' is written in the top right corner of the drawing area.



EYFS: Birch, Oak and Ash trees – seasonal changes, collage and colour mixing





### Generous bicycle donation

The British Alevi Federation and London Cycling Club (Londra Bisiklet Kulubu) kindly donated 4 adult sized bikes to our school to enable a cycling club to take place from January 2022. Although we had already invested in children's bikes, we were reliant on Cycle Enfield to support with cycling provision lessons. Now school staff can offer additional cycling practice by using appropriately sized bikes that our tallest pupils will also ride with greater comfort.



Four bikes were delivered to the school this week and handed over by the new Co-Chair of the British Alevi Federation, Müslüm Dalkılıç. Our Head Girl Nihal, Head Boy Varun, School Parliament Chair Aysema and Deputy Chair Tommy were grateful recipients on behalf of the school



The sturdy bikes are put to the test and get a thumbs up from Nihal, Tommy and Mr Bless.





# BOARD Game

OF THE WEEK



## SHUT the BOX



Shut the Box is a game of arithmetic, problem solving and logic. Roll both dice. Add or subtract the pips.



Here is a 6 and a 3. You can make 9 or 3 this way. More advanced children could make 2 by using division. Decide which number to shut or close. The winner is the first to have no numbers left to close.



As players develop confidence in operations other than addition and subtraction, the game becomes more interesting. Especially when a 3<sup>rd</sup> die is introduced. Older children may even want to calculate the probability of rolling a certain number.



Children will eventually realise that some numbers are harder to get than other.



I like the game because it makes me think hard what operation is best to use.

With 3 and 2, I can shut 3 different numbers: 1, 5 and 6.

The History of Shut the Box is unknown but records of the game can be traced back to 19th Century France. The game did not appear in England, however, until the mid 20th Century.

**Shut the box** (also called **canoga**, **batten down the hatches** or **trick-track**) is a game for one or more players, commonly played in a group of two to four. Traditionally, a counting box is used with tiles numbered 1 to 9 where each can be covered with a hinged or sliding mechanism, though the game can be played with only a pair of dice, pen, and paper. Variations exist where the box has 10 or 12 tiles. For our children we bought the 10 tiles game for 4 people.





# PRINCE OF WALES PRIMARY SCHOOL

We are taking bookings!

**WHEN:** Monday to Thursday 20<sup>th</sup> – 23<sup>rd</sup> December 2021

**TIME:** 10AM – 4PM

## COST

- £25 per day + £5 for a hot meal or bring your own packed lunch
- *OR Your child may be funded for a free place and hot meal if you are eligible for free school meals. Please contact your School office for further details.*

## HOW TO BOOK

Link: [schoolcamps.org/camp/prince-wales-primary-school-winter-camp-2021](https://schoolcamps.org/camp/prince-wales-primary-school-winter-camp-2021)

IF YOU HAVE ANY QUESTIONS OR ARE HAVING TROUBLE WITH YOUR BOOKING, PLEASE EMAIL [SCHOOLCAMPINFO@OURPARKS.ORG.UK](mailto:SCHOOLCAMPINFO@OURPARKS.ORG.UK)

## OUR ACTIVITIES

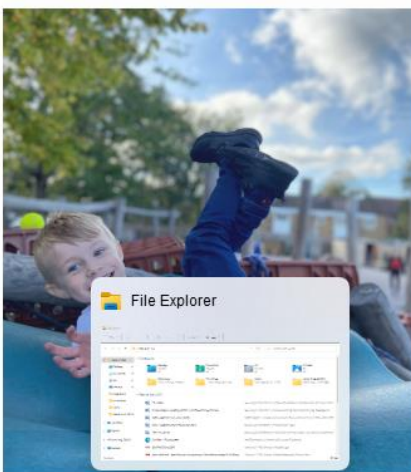
WE STRIVE TO CREATE NEW OPPORTUNITIES FOR ALL CHILDREN.

### ACTIVITIES MAY INCLUDE:

- PHOTOGRAPHY
- GYM & DANCE/STREET DANCE
- MAKING MUSIC
- CREATIVE PLAY
- SILLY SCIENCE
- ARTS CRAFTS
- WHEELS DAY! SKATEBOARDING, SCOOTER, BMX AND ROLLER BLADING
- FOOTBALL
- DODGEBALL
- PARACHUTE GAMES
- BASKETBALL
- HANDBALL

### AND MORE!!

BOOK YOUR PLACE AT: [OURCAMPS.ORG](https://OURCAMPS.ORG)



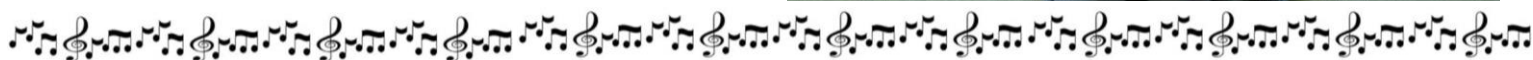
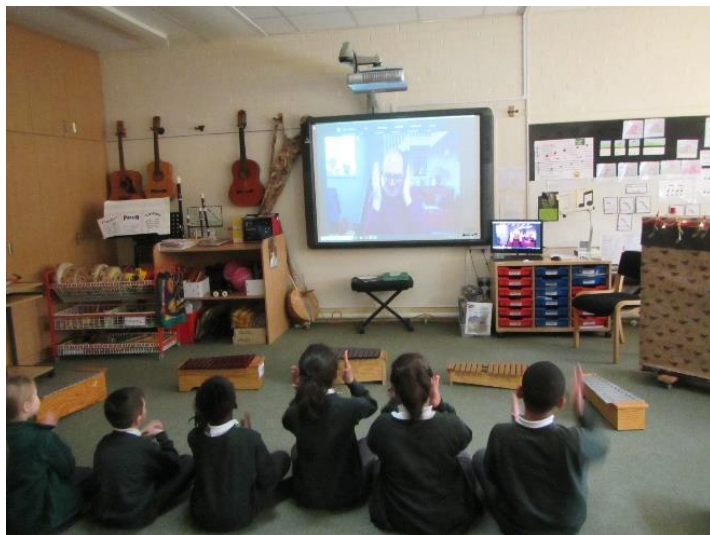
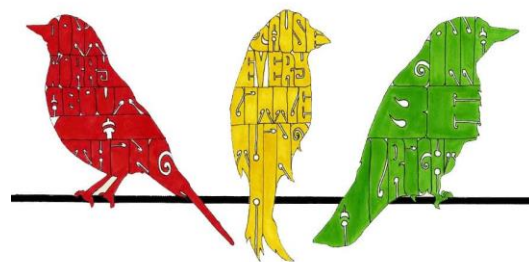


## 'THREE LITTLE BIRDS' - ENFIELD MUSIC SERVICE

On 3<sup>rd</sup> December some of our classes took part in a Zoom sign and sing activity led by Paul Whittaker. We joined live for a fun 20 minute session learning and performing the song "Three Little Birds," by Bob Marley.

This is the link to the Sing Up signing video for *Three Little Birds* if you want to sing along at home:

<https://www.youtube.com/watch?v=Ore4obZ3BEA>



## Year 4 learning to play the recorder

On Tuesday, a small group of Year 5 pupils offered to perform some pieces from their recorder concert to our Year 4 pupils. Year 4 enjoyed the performance and were able to ask Year 5 questions about playing the recorder before their first lesson later that day. Year 5 told them it was hard to start but if you are resilient and persevere you will enjoy it and become successful.







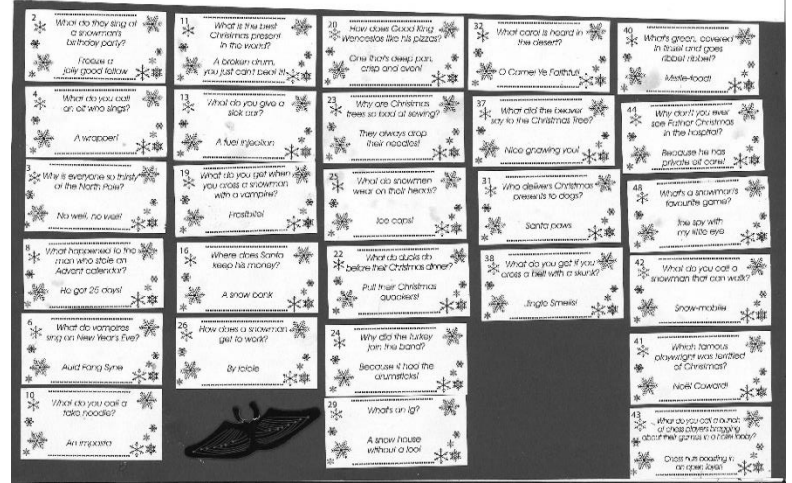


## **Cracker Jokes**

Mr Bless loves cracker jokes and their play on words. He thinks it helps our children develop vocabulary, idiom and improve their understanding of the English language; mostly though for just bellyaching fun – if you get the timing right!

[Why are Christmas cracker jokes funny?](#)  
[Christmas Crackers – why bad jokes work](#)

## Christmas Crackers – why bad jokes work





## Autumn 2 KS2 homework engagement KS2

Y3 77.5%	Y4 50.7%	Y5 55.4%	Y6 35.9%
Justin	Kezia,	Alaa	Toprak
Mehmet	Ela	Alissa	Blessing
Fares	Nida	Anna	Aysema
Furkan	Zaynab	Berat	Eliz
Natalie	Emin	Domantas	Varun
Zeynep	Indi	Erbil	Adrian
Eden	Ayse	Humaira	Sultan
Kaiden	Alan	Iqra	Havin
Anna	Yusra	Larissa	Yagmur
Macey	Nora	Maryam	Jakub
Nathan	Jayden K	Raj	Raahil
Aayden	Jayden E	Rehan	Sinead
Harmony	Yunus	Tasnim	Sonali
Reggie	Kevin	Tea	Kerem
Maisie	Cagan	Tia-Lauren	Jesal
Esra	Idris	Yavuz	Zack
Bintou	Birtan	Ellie	Zahra
Olivia	Yasmine	Ali	Esther
Tshion	Ryan	Jahsener	Nihal
Neda	Ronnie	Tia	Charlie
Eli	Elif	Millena	Jaida
Ali	Elnathan	Emmanuela	Bejna
Idris	David	Bethel	Eylul
Salim	Kye	Christine	Tatiana
Abdul	Ayse	Hameeda	Annabel
Sanita	Angello	Tanya	Naz
Gabriela	Abiyah	Maria Spencer	Wesle
Kimberly	Ozgur	Amelia,	
Angelica-Rose	Rona	Azra,	
Lynzie	Wahab	Bernice,	
Adrian	Yamin	Keshaun,	
Bella	Sadia	Rania,	
Nisa	Mia	Symone,	
Deniz	Paula	Thomas,	
Mazie	Constance	Ulkan	
Noah	Ibrahim		
Jolette	Neriah		
Cameron-Kaan	Cem		
Alessia	Alessandro		
Elif Nur	Maija		
Christakis	Jason		
Hasanali			
Mira			
Muhammad			
Wassim			
Furkan			
Selin			
Faruk			
Joseph			
Ege			
Amelia E			
Kenaya			
Valentina			
Omari			
Agnes			
Kirithik			
Caleb			
Elsa			
Irem			
Bella			
Phoebe			
Emircan			

## Homework Autumn 2

Well done to all these children for completing all their homework throughout the past seven weeks. They were given additional breaktime as a result. Now, why is Year 3 doing so much better than any other year group?



**ULTRASPORT**  
Saturday Morning Football Academy  
established over 20 years

**Venue:** Albany Park Bell Lane, Enfield EN3 5PA  
(next to ARK John Keats Academy)

**Cost:** £7.00 per session when attending  
[£20.00 subscription paid in two installments  
of £10 per term]

**Ages:** 5 years to 14 years

**Time:** 9.30am – 11.30am

**Any Saturday throughout the year**  
**New Players Welcome**

**Specialist Individual Football Coaching**  
**Available From April - August**

**Coaching • Games • Tournaments**  
**Mob: 07894 907104**  
email: [ultrasport.grenfell@googlemail.com](mailto:ultrasport.grenfell@googlemail.com)

f ULTRASPORT @ULTRASPORT

**ESOL**  
English for Speakers of Other Languages

## FREE ESOL CLASSES

The courses are aimed at adults aged 19 plus – both male and female – with very little English at the moment (pre-entry or at most Entry level 1).

Potential learners will be assessed before starting a course.

Each learner will receive 30 hours of support in groups – 20 hours will be formal classroom time and 10 hours can be off-site social activity where learners apply their newly acquired skills in a real-world setting.

The learners need to be economically inactive (so not employed, self-employed or in receipt of work-based compensation, such as that provided through 'furlough' schemes). Ideally, they should be long standing residents. It is very much aimed at those who are unwilling or unable to join classes at the college, perhaps because of caring responsibilities, digital exclusion, lack of confidence or literacy in a first language.

**Please come to the office and leave your contact details.**  
**Mrs Rees will contact you.**

Class	engagement	Children completing 100% homework
Birch	2/28	Amine, Jasiel
Oak	9/29	Sophie, Oscar, Jaxon, Ethan, Eylem, Liya, Owen, Jensila, Thijash
Ash	6/27	Laura, Lavin, Samuel, Victoria, Willow, Zayne
1H	11/27	Antonia, Aras, Lara, Liza, Maria, Naomi, Naz, Rebecca, Ryan, Sena, Vincent.
1W	2/27	Aiden J, Joshua
1K	5/25	Amanda, Olivia, Jayda, Azari, Simal
2L	19/26	Alyssa, Botan, Charlie, Jessica, Joyce, Vladi, Madiha, Maryama, Mia, Miran, Naal, Oscar, Priceless, Sengul, Vivaan, Yagmur, Yasmin, Yusuf, Alion
2T	6/25	Amelia, Imran, Jessica, Selin, Ada, Nevelyn
2A	21/28	Sofie, Mikail, Christabel, Rosie, Shireen, Nathanael, Walid, Ziah, Ellerie, Bersu, Nida, Eliana, Ariyan, Elisiana, Skylar, Dylan, Marlorney, Jayden, Destiny, Rome, Marvellous



**WEEK 1**

**JANUARY WINTER**

**MONDAY**

Veggie Sausage, Mashed Potatoes, Gravy, Green Beans. (V)	Campfire Casserole, Mashed Potatoes, Gravy, Green Beans. (VG)	Pasta Twists with Tomato & Basil Sauce. (VG)
Yoghurt Pot (V) or Fresh Fruit (VG)		

**TUESDAY**

Chicken and Vegetable Pie, Carrots. (VG)	Jacket Potato with Cheddar Cheese (V) or Baked Beans. (VG)
Vegan Apple and Cinnamon Cake or Fresh Fruit. (VG)	

**WEDNESDAY**

Macaroni Cheese, Broccoli. (V)	Pasta Bows with Tomato & Basil Sauce. (VG)
Sticky Banana Cake (V) or Fresh Fruit. (VG)	

**THURSDAY**

Chilli Con Carne, Rice, Sweetcorn. (VG)	Jacket Potato with Cheddar Cheese (V) or Baked Beans. (VG)
Oaty Apple Crumble (VG) with Custard or Fresh Fruit. (VG)	

**FRIDAY**

Battered Pollock Fillet, Oven Chips, Garden Peas, Homemade Ketchup. (V)	Jacket Potato with Cheddar Cheese (V) or Baked Beans. (VG)
Vegan Chocolate Cake or Fresh Fruit. (VG)	

(V) VEGETARIAN (VG) VEGAN (DP) DAIRY FREE (GF) GLUTEN-FREE

**SALAD BAR AND BREAD SERVED EVERYDAY!**

Our new menu has been developed to celebrate the winter season with hearty meals full of healthy ingredients. Firm favourites, regional dishes and fruit-based desserts will excite young diners as well as deliver high levels of nutrition and flavour.

**CHEF'S APPROVAL**

**WEEK 2**

**JANUARY WINTER**

**MONDAY**

Vegetable Pizza Margherita, Herby Potato Cubes, Coleslaw (V)	Veggie Sausage Roll, Herby Potato Cubes, Coleslaw (V)	Jacket Potato with Cheddar Cheese (V) or Baked Beans (VG)
Yoghurt Pot (V) or Fresh Fruit (VG)		

**TUESDAY**

Roast Chicken, Potatoes, Winter Veg and Gravy. (VG)	Vegetable Roast, Potatoes, Winter Veg and Gravy. (VG)	Pasta Twists with Tomato & Basil Sauce (VG)
Zesty Carrot Cake (VG) or Fresh Fruit (VG)		

**WEDNESDAY**

Beef Bolognese, Pasta Shells & Greens Beans	Meatless Bolognese, Pasta Shells & Greens Beans. (VG)	Jacket Potato with Cheddar Cheese (V) or Baked Beans (VG)
Coconut & Lime Biscuit (VG) or Fresh Fruit (VG)		

**THURSDAY**

Caribbean Chicken Curry, Rice & Sweetcorn	Caribbean Vegetable Curry, Rice & Sweetcorn. (VG)	Pasta Twists with Tomato & Basil Sauce (VG)
Ginger Cake (VG) or Fresh Fruit (VG)		

**FRIDAY**

Battered Pollock Fillet, Oven Chips, Garden Peas, Ketchup	Vegetable Fingers, Oven Chips, Garden Peas & Ketchup. (VG)	Jacket Potato with Cheddar Cheese (V) or Baked Beans (VG)
Chocolate and Banana Cake (VG) or Fresh Fruit (VG)		

(V) VEGETARIAN (VG) VEGAN (DP) DAIRY FREE (GF) GLUTEN-FREE

**SALAD BAR AND BREAD SERVED EVERYDAY!**

Our new menu has been developed to celebrate the winter season with hearty meals full of healthy ingredients. Firm favourites, regional dishes and fruit-based desserts will excite young diners as well as deliver high levels of nutrition and flavour.

**CHEF'S APPROVAL**

## HEY, FAMILIES OF ENFIELD!

Want to make healthy habits together as a family (and have fun doing it)?

We are BeeZee Bodies, and we're here to help improve your family's health and wellbeing. Our team are experts at engaging kids around healthy eating and healthy habits (we've even won awards to prove it!) and now we're offering support to families in Enfield for FREE!

### FREE SERVICES AVAILABLE IN ENFIELD

**Self guided online learning**  
BeeZee Academy  
An online portal full of healthy living resources to help you learn about healthy lifestyles at a time that works for you.

**12 week online course**  
BeeZee Families Live  
Fun, interactive webinars led by our expert nutritionists to help your family create healthy habits and routines at home.

**Community groups**  
BeeZee Families  
Join us in your local community to learn about healthy living; including cooking lessons and activity sessions.

**One-to-one support**  
BeeZee Lite  
A one hour chat with us, to support you with a specific challenge around maintaining healthy habits at home.

**WHO IS ELIGIBLE?**  
Families with at least one child who is 5-15 years old, has a BMI > 91st centile and lives/goes to school/s is registered with a GP in Enfield...but the whole family is encouraged to participate together!

**SIGN UP TODAY AT**  
[BEEZEEBODIES.COM/FAMILIES](http://BEEZEEBODIES.COM/FAMILIES)

**“ I think BeeZee Families is great and totally worth your time! I became a lot healthier and discovered I love playing Basketball! ”**

**PRABHU**

Hello, parents & guardians! We are BeeZee Bodies, and we work with Enfield Council to provide FREE (and FUN!) healthy lifestyles support for families.

We run after school groups in Enfield, online courses or 1:1 appointments - whatever works best for you.

We have new groups beginning in January. click below to sign up for your family's FREE place!

\*To be eligible for this awesome free service, your family must live/go to school in Enfield and include one child who is above their ideal healthy weight.

## BERRY CHRISTMAS

Terry who?! Try BeeZee's Chocolate Orange and our cute strawberry santas for a healthier alternative to Christmas sweet treats! You don't have to be a grinch to encourage healthy eating this Christmas, these fruity snacks are full of festive magic and loads of fun to make!

**BeeZee's Chocolate Orange**

**what you'll need**

- Clementines
- Chocolate
- Optional decoration (chopped nuts, edible glitter, sprinkles)

**what to do**

- Peel and segment the clementine
- Melt some chocolate in the microwave
- Dip the clementine segments in the chocolate
- Add decoration if you're feeling fancy!
- Leave to set in the fridge

**Little Santa Strawberries**

**what you'll need**

- Strawberries
- Whipped cream
- Chocolate
- Tooth picks
- Banana

**what to do**

- Chop off the stalk of the strawberry
- Slice the strawberry a third of the way up
- Squirt on a small bit of whipped cream
- Pop a slice of banana on top of the cream
- Then, add the top of the strawberry on to the banana
- Melt a piece of chocolate in the microwave for about 30-45s
- Using a toothpick and the chocolate, draw some eyes on your santas!

[BeeZeeBodies.com](http://BeeZeeBodies.com)

03308 186308

BeeZee Families

ENFIELD Council



# Computing Hero of the month

This month, pupils have been researching Amali de Alwi- another pivotal and inspirational figure from the world of computing. Read on to find out some of the information we retrieved at Prince of Wales.....

She attended Nonsuch High School for Girls and graduated in 1998. She studied manufacturing engineering at the University of Birmingham.

## Code First: Girls

De Alwi has spoken extensively about the need for more women in technology and the lack of computer science teachers in school education. So, in 2015 she decided to join code first. Under her leadership, [Code First: Girls](#) has taught more UK women to code than the British university system.

## Impact:

She has been recognised the WISE Campaign for her "significant impact in encouraging girls to code". She won the 2017 Women in IT award for her services to electronic skills. She was selected as Computer Weekly's Most Influential Women in IT in 2018, after being in the top ten in 2017.

**Amali De Alwi's early life and education.**  
Amali De Alwi attended Nonsuch high school for girls and graduated in 1998. She studied manufacturing engineering at the University of Birmingham. In 2002 she completed a foundation course at Camberwell College of Arts before studying Product Development at the University of the Arts London.

**Why is Amali De Alwi's influential or Significant.**  
She has been recognised the WISE Campaign for her significant impact in encouraging girls to code. She won the 2017 Women in IT award for her services to electronic skills. She was selected as Computer Weekly's Most Influential Women in IT in 2018, after being in the top ten in 2017.



**Amali De Alwi - facts - by nevesh 67**  
A  
Amali De Alwi MBE - Managing Director, Microsoft for Startups at Microsoft. Amali De Alwi MBE FRS was previously the CEO of Code First: Girls, and replaced by Anna Brailford. She is a UK Managing Director of Microsoft for Startups. She is a board member of Ada, the National College for Digital Skills, and the Institute of Coding. She has been recognised the WISE Campaign for her significant impact in encouraging girls to code. She won the 2017 Women in IT award for her services to electronic skills. She was selected as Computer Weekly's Most Influential Women in IT in 2018, after being in the top ten in 2017. She was awarded an MBE in the 2018 New Year Honours for services to diversity in technology.  
Amali De Alwi attended Nonsuch High School for Girls and graduated in 1998. She studied manufacturing engineering at the University of Birmingham. In 2002 she completed a foundation course at Camberwell College of Arts before studying Product Development at the University of the Arts London. She enrolled on the Graduate program at Clarke, which she left to become a co-founder of Karbon TMS. At TMS Alwi advised organisations on stakeholder management and digital strategy. Amali De Alwi (born in 1980 MBE FRS) was the CEO of Code First: Girls. Replaced by Anna Brailford. She is currently the Managing Director of Microsoft for Startups. She is a board member of Ada, the National College for Digital Skills.

**Amali De Alwi - facts - by nevesh 67**

## INTERGENERATIONAL PROJECT - December 2021



O Christmas Tree



Winds through the Olive Trees



Good King Wenceslas looked



Away in a Manger

TWELVE of our Year 6 children involved in the Intergenerational project presented a lovely handmade Christmas card as well as sang a few of our favourite Christmas carols. Their performance was video recorded and sent to the Albany Home Care centre in Enfield, for the elderly residents to enjoy as a way to continue our link with members of the community.

Unfortunately, the children could not visit the centre as originally planned due to the outbreak of the new COVID19 variant. The video recording was well received by the centre manager and the residents.

Mrs Gilfillian  
Project Lead



## Year 2



Making 2D & 3D free standing structures using plasticine & sticks.

D&T  
I can investigate and make structures – We made free standing houses like those built after the 'Great Fire of London'.



D&T: I can design, make and evaluate a house.

"I learned to use masking tape"

"I learned the walls have to be strong"

"It helps if you work with a friend"

History and our 'Great Fire of London' topic linked to areas of our curriculum including: D&T, English, DGR, Science, and Geography.



RE: I can understand the key features of the story of Hanukkah.



RE: Children learned some traditional Hanukkah symbols when playing the dreidel game.



RE: Year 2 had a question and answer session with Mrs Waldman to deepen learning of the Jewish faith.  
"Where do Jewish people pray?" "In a building called a Synagogue, it can be in a house"  
"Is the leader of the Synagogue a vicar?" "The leader of the Synagogue is called a rabbi".  
"What clothes do you wear when it is the last day of Hanukah?" "Ordinary clothes".



ICT: Using Bee-Bots we identified different routes on the mat.



Geography: Using maps we located and recorded the seas that surround the UK. We also used our geographical vocabulary and knowledge when we went to the Monument.

Tree Week: We linked our learning across subjects with our art tree project. Can you see the parakeet?





## Year 2



In math's we have been identifying and describing the properties of 2D and 3D shapes. We have also been working with fractions.

Music: I can work in a group to compose and notate music. I can read and perform music using long, short, loud and quiet.



Science: Shaping Up - Can I change the shape of different materials? What properties of materials allow us to change their shape?



Testing the elastic band, hair band and ribbon to see which would go the furthest. It was a fair test because we started at the same point.



English: We drew an outline of the Lonely Beast using white chalk on black paper. Together we wrote noun phrases about what the beast looks like, how he feels and his personality.



English: We looked at a picture from the book 'A Walk in London'. In groups we discussed ideas and recorded our sentences about what I know, what I think and what is puzzling me.



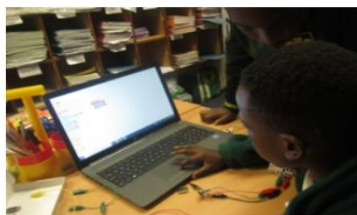
Philosophy for Children (P4C)



PSHE: We explored Mental Wellbeing, Anti-Bullying, Internet Safety and Road Safety.



## Year 4: Autumn 2 Learning



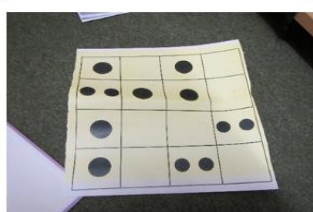
Year 4 have been making, coding and designing an emergency light.



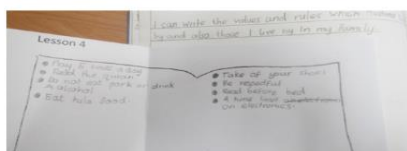
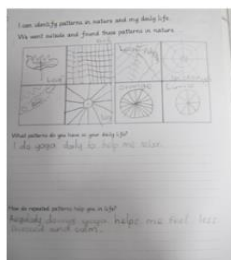
In our Geography lessons, we have been learning about trade and how it has changed over time. The children designed posters explaining what Fairtrade is.



Our Music lessons have been supported by Mrs Redmore. Together we have been learning rhythms and how to play and read musical notes.



In RE we have learnt about Islam. We studied how Islam has patterns that can be applied to everyday lives. We also learned about Islamic values and the different names for Allah.



In December, we went to Salmons Brook to plant trees. This was to help the environment and reduce the risk of flooding.

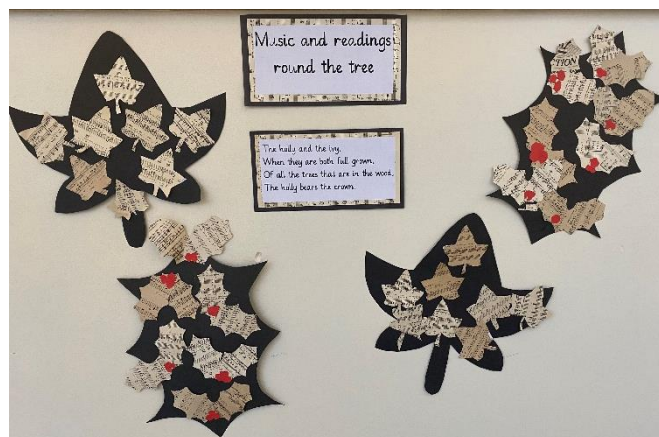
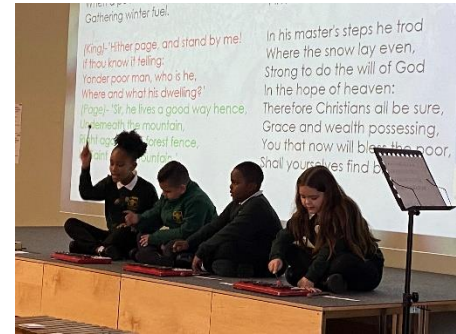






### A special visitor

Class 6Ta received an unexpected visit from a robin today. It sat quite happily on the projector before making its way out again. We like to think that it wanted to join in the festivities of this morning especially as it is the garden bird of choice in this season.



Very clever by Mrs Redmore for representing musical pieces for our *Songs and Readings Round the Tree* this way.



## Year 3- Autumn Term 2



### Design and Technology:

#### Making a Purse



During D&T, we made purses, using recycled material. We cut and sewed fabric together and decorated used buttons and sequins.



### Geography:



Year 3 have been learning about mountains, in geography. This lesson, we have made 3D contour maps.



### Christmas fun



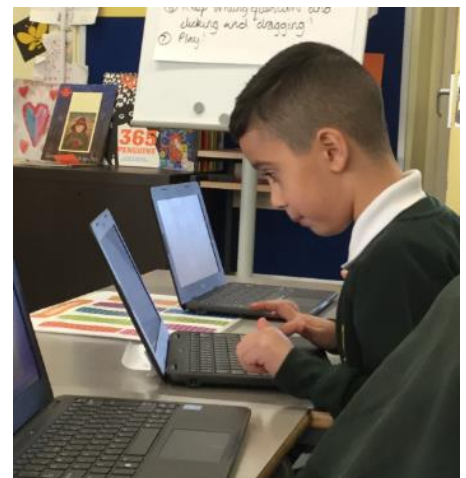




Lots of Christmas fun this week, in year 3. Here are some pictures of our Christmas parties and activities.



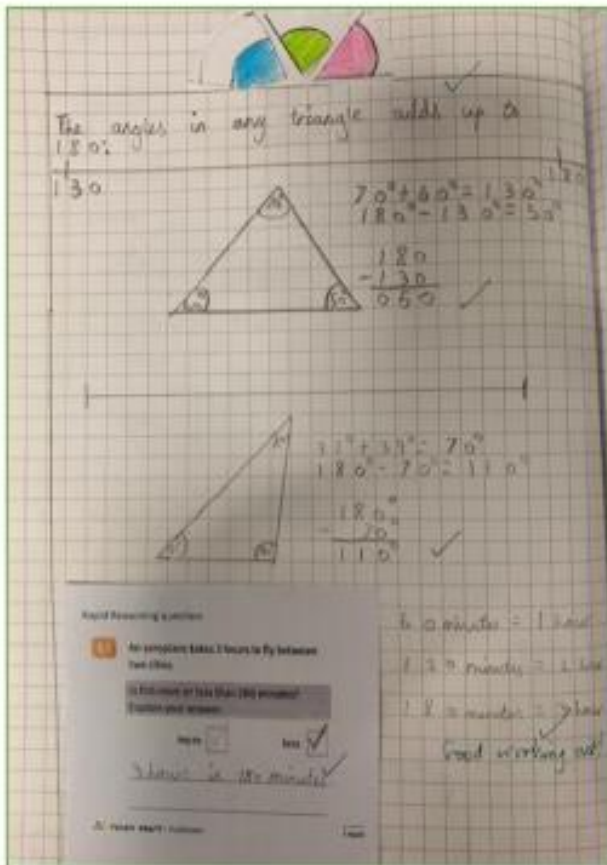
ICT



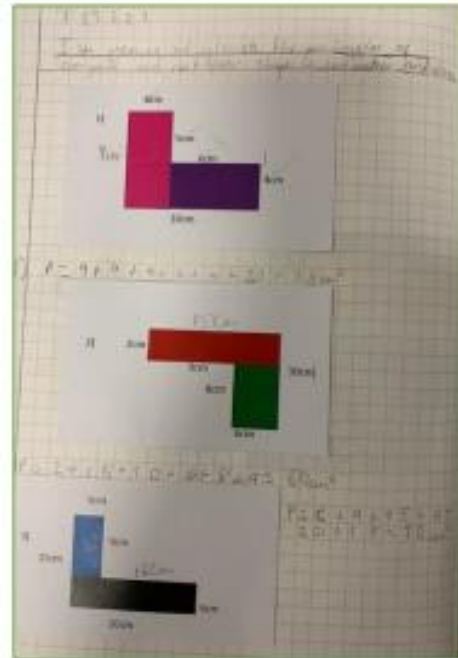
ICT has been lots of fun, as we have been branching databases, using the information to make online



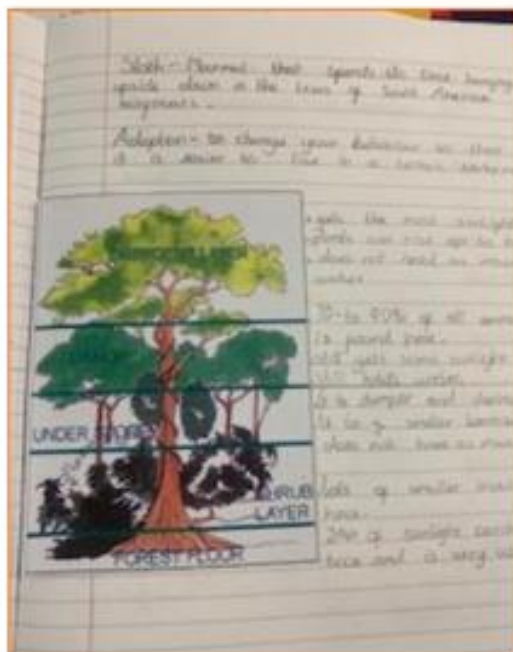
# Year 5 Autumn 2



**Maths** – this half term we have been working on the angles in a triangle and Area and Perimeter.



**English and Geography cross curricular work** – we have been writing persuasive arguments about the Amazon Rainforest, and researching the importance of the Rainforest.







**Oasis secondary school** – we went for 'taster lessons' in Coding and History. In addition to this, we took part in their Christmas production, working with their Year 10 performing arts pupils



**Music** - We were very proud to perform to our parents and carers in our recorder concert.



**Art Project** – During Tree Week, Year 5 created their own sculptures during in the style of Anselm Kiefer.







DATE	TIME	YEAR	EVENT
04.01.22		all	Start Spring Term
14.01.22	All day	Year 4	Verulamium visit
27.01.22	All day	Years 1-6	Pantomime: Snow White
11.02.22			<b>100% ATTENDANCE CLUB</b>
14.03.22	All day	all	School closed – Inset Day 4
28.03.22	All day	all	Individual school photos
17.05.22		all	<b>100% ATTENDANCE CLUB</b>
24.06.22	All day	all	School closed – Inset Day 5
27.06.22	All day	all	School closed – Queen's Platinum Jubilee - School Bank Holiday
22.07.22		all	<b>100% ATTENDANCE CLUB</b>
22.07.22	At 1:30pm	all	School closed at 1:30pm for Summer break



Merry Christmas and Best Wishes for 2022

from

Children and Staff at Prince of Wales Primary School

*With thanks for your support this year.*

*Jan M Bless*

Each year group has adopted one of the many different trees on our school grounds and is following its seasonal changes as part of Science 'Changing World'. Year 6's is the walnut tree that was the wood of choice for the Enfield Rifle made at the Royal Small Arms Factory at Enfield Lock. Through a 2-year ETSP funded art project, we are developing the teaching of painting, led by artist Daniel Wallis. Inspired by the Austrian artist Hundertwasser, each Year 6 class used acrylic paint to depict their walnut tree during a different season by selecting appropriate warm or cold colours and experimenting with contrast, tone and shade.

