



PRINCE OF WALES PRIMARY SCHOOL

Newsletter
15th January 2021

Listening Excellence Attitude Respect Negotiate Enjoy Responsible Support

Dear Parents/Carers, Governors and Friends,

This week started with a lot of controversy about the food parcels for children on FSM. Although I hope that our parents who received their parcels agree that theirs was better than those circulating in the media, I am glad that the Government is changing to the voucher scheme. With the best will in the world, it is not for Government to dictate what meals parents provide at home by giving ingredients. However, it has come to my attention that 37 families have not yet redeemed the 2 week Christmas vouchers that Enfield Council administered; these must urgently be redeemed by 7th February – please see letter on page 8 – or they will be void.

From the attendance data below, I can see that many more children are participating in remote learning. We have been doing our best to understand what obstacles to participation exist and we have been able to lend 74 laptops to KS2 pupils. I am now trying to persuade the DfE for KS1 laptops as well. Some parents collected the Vodafone mobile phone data cards that are still available and 9 parents will hopefully benefit from the Government's free data extension scheme once their information has been processed.

In the light of free schemes for families to access food or technology, I want to impress on parents to be extra vigilant for online scams. The FSM vouchers have not been claimed as some parents may have been concerned that these were scams. Similarly, we have had a report that bank details have been asked for to access 'free' technology. Do contact us if in doubt. We don't want you to miss out nor that you end up falling for a dishonest profiteer.

From the work in this newsletter you can see the breadth of learning that has taken place this week. On Monday, I asked our pupils to demonstrate being ready for home learning and create a poster (page 11) that promotes this. The certificates this week were given to those that modelled this well, such as: being appropriately dressed, having a suitable learning environment (not in bed), joining in the live sessions on time, completing work and returning for feedback, not eating breakfast during a live session.

Kind regards

Mr Jan M Bless - Headteacher

Our Value this week was **Be Ready for Home Learning**

The following pupils modelled the value this week:

Vladi 1H, Elleyanna 1K, Elias 1T, Mira 2A, Lynzie 2L, Elif Nur 2T, Mia 3F, Maija 3G, Jayden 3W, Sel 4F, Humahira 4H, Bernice 4R, Varun 5G, Eliz 5K, Siloe 5T, Tyrese 6B, Rosamaria 6T, Collins 6TH

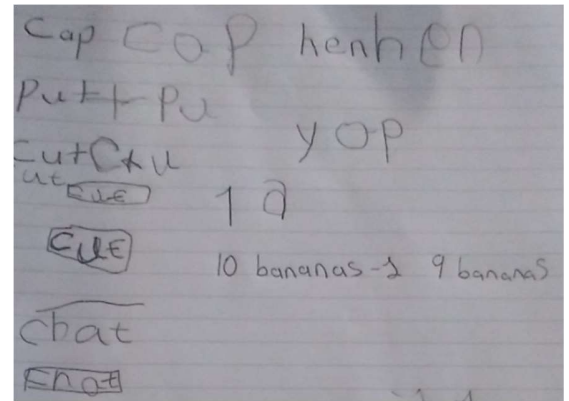
Remote Learning Attendance from Friday 8th January – Thursday 14th January 2021

Ash 54.00%	1H 77.85%	2A 82.96%	3F 81.60%	4F 84.34%	5G 91.20%	6B 95.71%
Birch 78.00%	1K 74.28%	2L 81.53%	3G 91.03%	4H 74.40%	5K 86.20%	6T 92.14%
Oak 64.00%	1T 89.65%	2T 72.80%	3W 84.00%	4R 88.33%	5T 90.76%	6Th 95.71%

Well done to **Birch, 1T, 6B and 6Th** for best attendance this week.

Overall attendance since 5th January Y1 – Y6 **85.24%**

In phonics we have been using our sounds to Fred talk words to read and write.



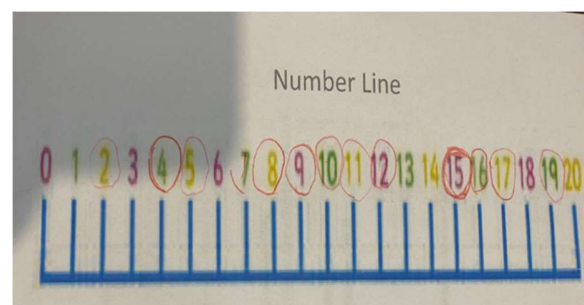
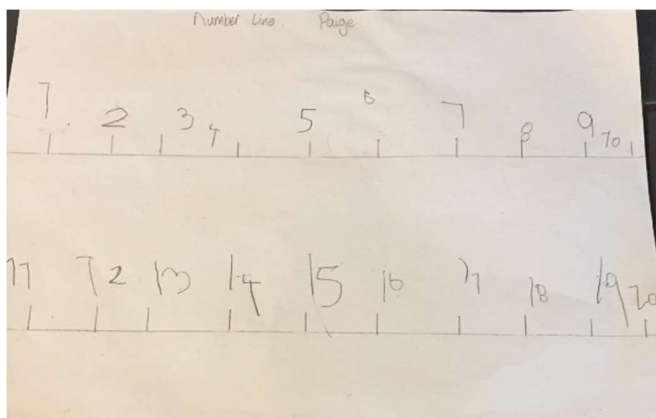
Reception

Home Learning

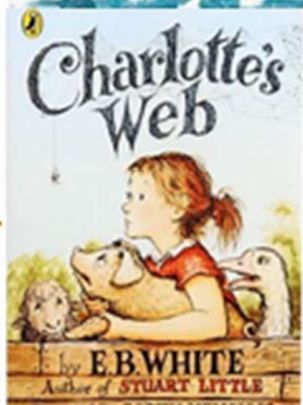
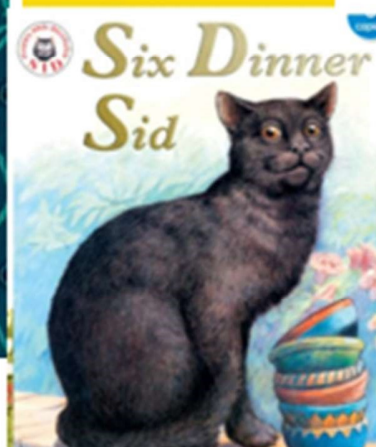
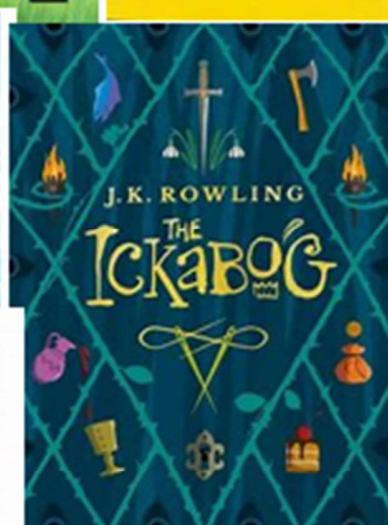
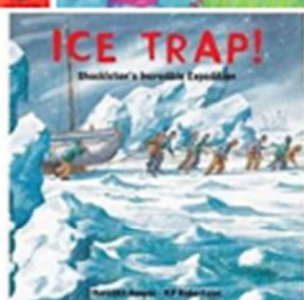
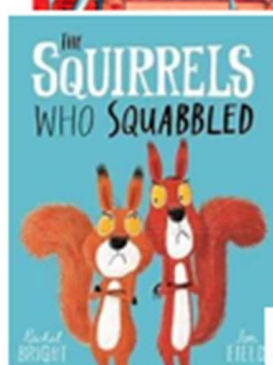
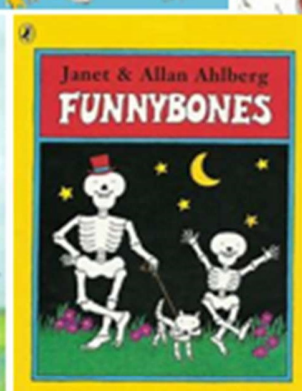
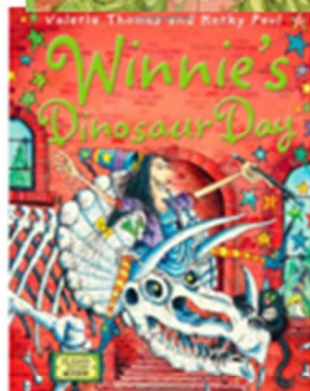
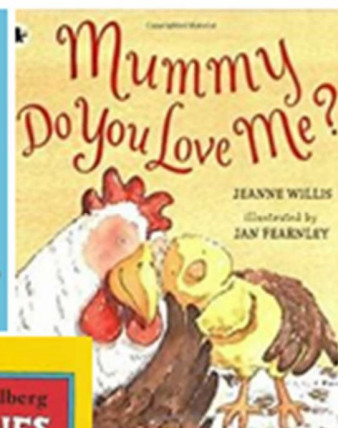
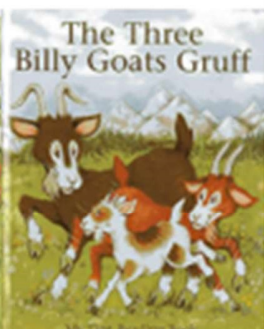
In Literacy we have been reading the traditional tale The Three Billy Goats Gruff. We made masks and described the characters.



In math's we have been saying the number one less than a number to 20.



Reading Books linked to our learning that we have read this week:



Star reader of the week!

Maija 3G

4 quizzes taken
4 passed

For completing the highest
number of quizzes this week!
Well done!



**Accelerated Reading
Champions of the week**



Well done again to class **3G** for completing the highest
number of Accelerated Reading quizzes this week!

Amount of quizzes taken: 10

Amount of quizzes passed: 10



Reading while at home

There have been lots of lovely stories read to children since home learning started. Don't forget, if you are able to, access Accelerated Reader and complete a quiz on the stories you have heard!

You can access this by pressing the following link:

[Welcome to Renaissance Place \(renlearn.co.uk\)](http://Welcome to Renaissance Place (renlearn.co.uk))

In Year 1 we have been enjoying our learning this week. It is important that we keep our bodies fit and healthy as this helps us to learn. We made balance beams at home and carefully walked along them. We made it more challenging by hopping on each foot.



POW Recommends

Let's Go Live with Maddie & Greg provides some excellent educational entertainment on youtube with a Science focus for all the family. New live programmes are being shown during lockdown each Monday, Wednesday and Friday. Those who can't watch the show live, each episode is posted on YouTube afterwards.

www.youtube.com/maddiemoate



#letsgolive #maddieandgreg #science

What is "Let's Go Live with Maddie & Greg OUT & ABOUT"?



CONGRATULATIONS!

Well done to everyone who has logged on to Times Tables Rock Stars this week! Each week we will be announcing the results of who has achieved high results on TTRS.

This week our three highest scoring students are:

Varun 5G

Praveen 6T

Ellie 3F

The certificate for the class with the most active players in the whole school goes too...

3G – Well done 3G you have had 52% of your class actively playing.

Don't forget to login and play. Try and be the winning class! We can't wait to see who has been practicing their times tables! Keep rocking!

Goal

When it comes to times tables, speed AND accuracy are important – the more facts your child remembers, the easier it is for them to do harder calculations.

Times Table Rock Stars is a fun and challenging programme designed to help students master the times tables!

To be a Times Table Rock Star you need to answer any multiplication fact up to 12×12 in less than 3 seconds!

Logging in to Times Tables Rock Stars

1 Type play.ttrockstars.com into your browser's address bar.

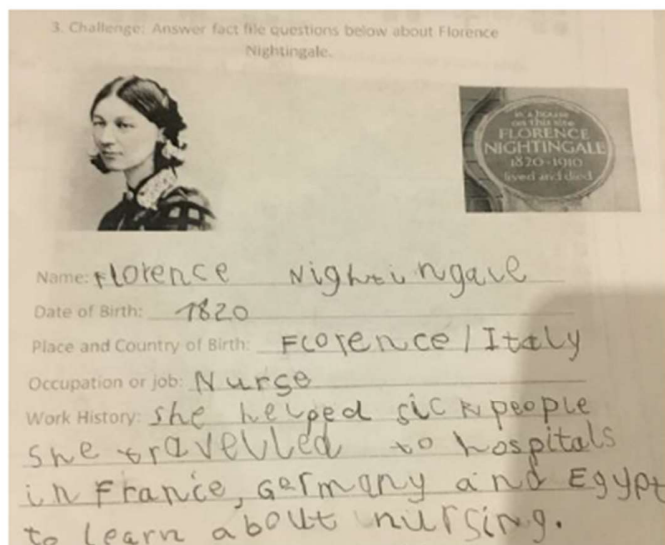
2 Click Login! > School > Student

3 Enter the School Name.

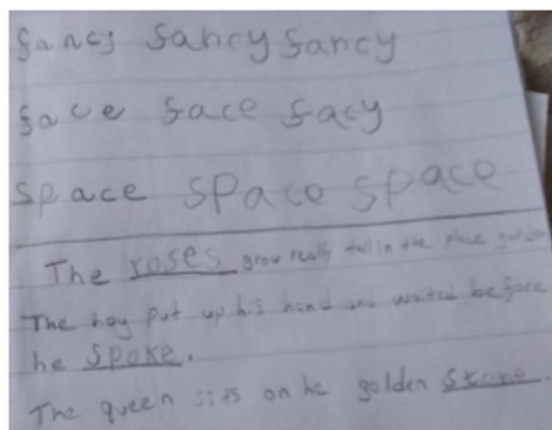
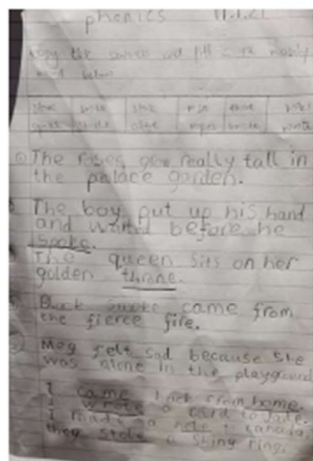
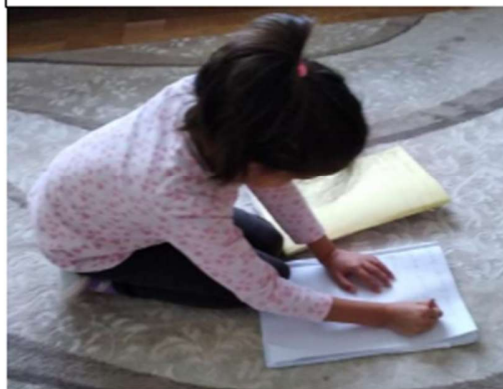
4 Enter your child's username and password.



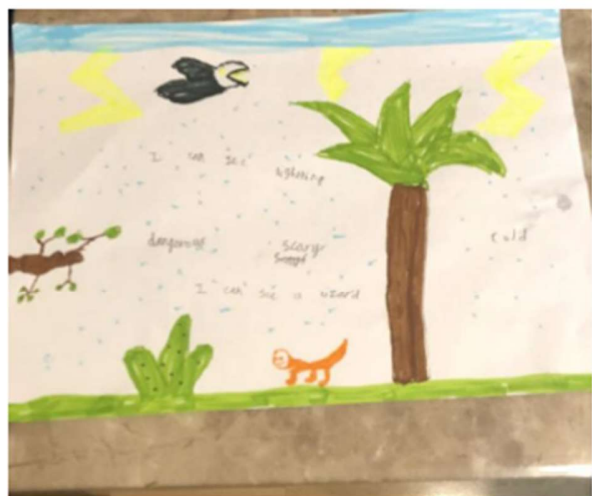
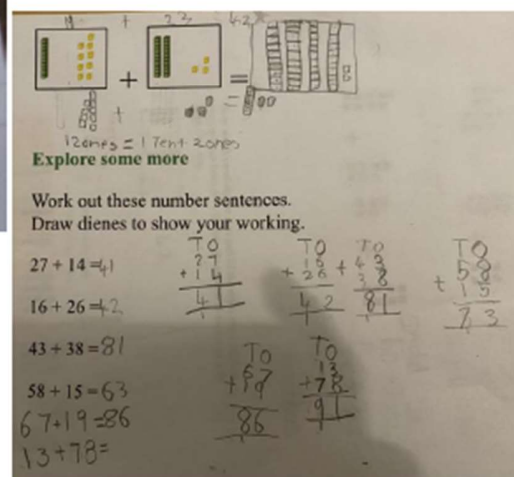
Year 2: Home Learning



In history the children have been learning about Florence Nightingale and Mary Seacole and their nursing roles during the Crimean war.

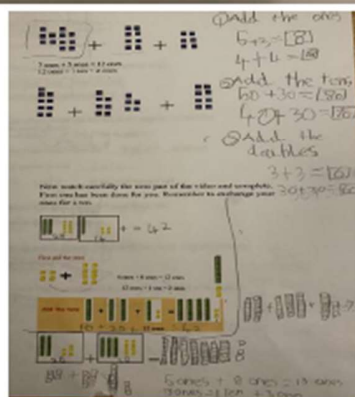


The children practise daily their hand writing, phonics and reading.



I can visualise and draw where the main character lives (English).

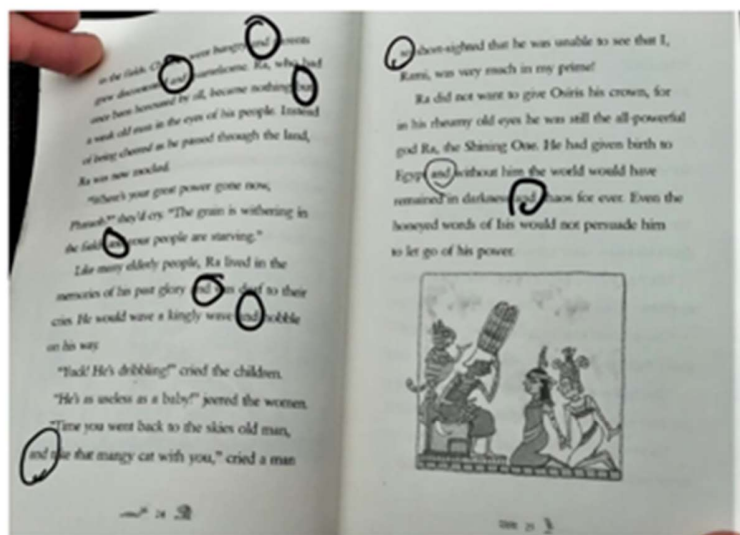
Year 2 are adding using
Dienes.



Year 3 Home Learning

1. $4 \times 4 = 16$
2. $10 \times 6 = 60$
3. $9 \times 3 = 27$
4. $5 \times 2 = 10$
5. $8 \times 3 = 24$
6. $0 \times 5 = 0$
7. $3 \times 3 = 9$
8. $10 \times 2 = 20$
9. $4 \times 5 = 20$
10. $2 \times 11 = 22$

This week, we continued to practise our times table. This is Tyler's work!



This week, we have been learning about Ancient Egypt. Ayse found all the conjunctions in this text

Word	Definition
Attract	Where there is magnetism
Repel	Come together
Exerts	A type of magnetic metal
Magnetic field	Show
Iron	Push away

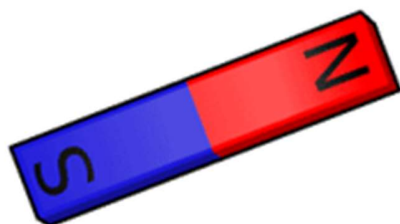
During our DGR sessions, we have been learning about Magnetism. Dalva matched these definitions!



A right angle is an angle of 90° .

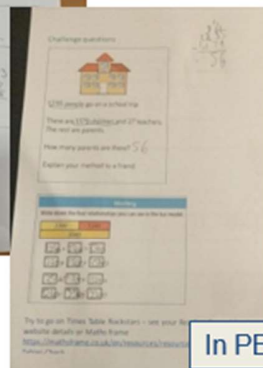
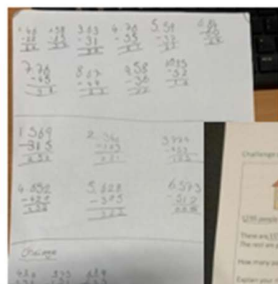


Rona found this right angle at home!

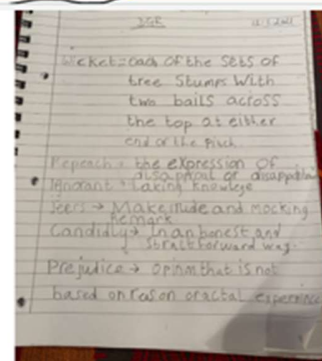
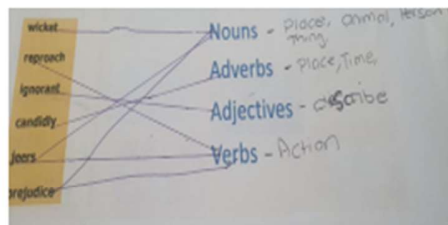


Year 4 Home Learning

We have been working on our subtraction skills in maths.



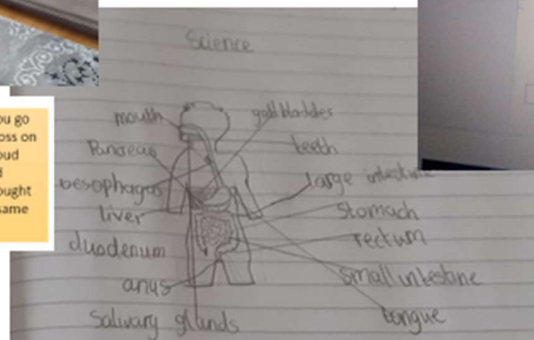
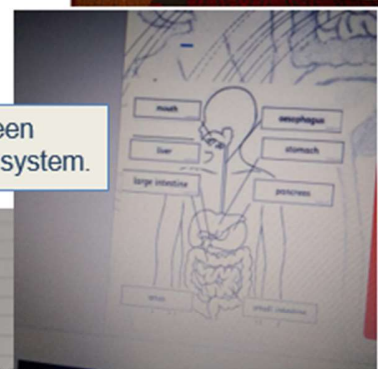
In DGR and History we continued to look at the local area and local heroes such as Walter Tull.



In PE we have been learning dance.



In Science we have been studying the digestive system.



Your paragraph:

The bright blue forest looked like a wonderland with winding branches and crunchy leaves on the floor. In the forest you would here robins and ravens twittering in the night and the sound of trees shaking as foxes flashed by. At the far end of the forest you would smell the sweet pollen of roses and lavenders. In the forest you would taste soft yummy berries. In the forest you would feel the rough barks of the trees.



The trees talked to each other
The trees had a race
A bat and cheetah were talking
The grass was shopping for food shopping
The leaves were playing
The trees danced in the moon light
Bushes were laughing

The forest **smelt** of damp grass and fresh herbs. When you go deeper into the forest you can see cracking trees with moss on them. The leaves **feel** wet like a dog's nose. Suddenly a loud chirping sound was **heard**. The fox got frightened and hid behind a mulberry bush. Since he hasn't eaten yet he thought he would eat a berry it **tasted** bitter and sour but at the same time delicious.

We have been writing about the forest that the fox lives in for our book The Fox and the Star.

Dear Parent/Guardian

The Council provided a voucher during the **Christmas period** to all parents who have children in receipt of a free school meal. Your child's school provided us with a mobile and/or email address so we could sent a bar coded voucher for you to cash or pay for shopping at a Paypoint retailer.

It appears that your voucher remains uncashed. There may be a number of reasons for this. Can you please review emails or texts you received between the 11.12.2020 to 14.12.2020 from 'LBEnfield Cashout'. If you have deleted the message please email paypoint.cashout@enfield.gov.uk and we will re-issue the voucher.

Please refer to the attached FAQ's or follow the information below to cash your Paypoint voucher:

PayPoint cash vouchers are easy to use, look for PayPoint sign outside of the shop.



- Parents will receive a text or email message from 'LBEnfield Cashout'
- Click on the link on the text or email message. You will have a bar coded voucher and a link to enter your postcode to help you find your nearest PayPoint retailer.
- You can also visit: <http://www.paypoint.co.uk/paypointlocator>. There are over 140 PayPoint retailers in Enfield
- Visit your PayPoint retailer, show the shop assistant the bar coded voucher on your mobile / email and they will give you the cash or you can pay for shopping using the voucher.
- Vouchers will expire after **30 days from the date issued** if they have not been redeemed.
- Please find attached a copy of the PayPoint Cash Voucher FAQ's for more information.
- If you have issues cashing your cash voucher when you are at a PayPoint retailer, PayPoint can help the retailer process the voucher, please ring PayPoint on 0330 400 0002

FSM Letter

This **REAL** message was sent on 5th January – check your emails, spam or deleted items. 37 families have yet to redeem this voucher for 2 weeks free meals entitlement !

The Council is here to help during this difficult time. Please visit the Council's website <https://new.enfield.gov.uk/services/your-council/enfield-stands-together/> which provides a range of local support available. Alternatively you can ring 02083791000 and press option 7.

English – A letter to the Tree cutter

Senhor
Visitor to the Amazon Rainforest
Brazil
Dear Senhor,

I am writing to you about the danger that the rainforest is in. The animals seem to get less every day when fools like yourself start making themselves at home and destroy these trees.

The rainforest is home for millions of species for example the spider monkey. Spider monkeys spend most of their time on trees. They don't only use the trees for food but to sleep on. There are millions or even billion of animals that died because of the harm that you do to these trees, how will myself and others hide from our predators?

The rainforest isn't only for tourists it's for animals too. What us animals call home. If heartless men like you start chopping down these trees you won't get any more honey because we will all be **killed**.

In addition, it is awfully wrong to take away this beautiful nature. 50% of the rainforest is animals and plants. We are the only thing left keeping this whole world together. If you endanger us you endanger everything.

My friend, I ask again in the most polite way I can, stop cutting these trees! It's my home my only home I'm not going all the way to London or Africa with no food just to find a new hive.

I say my final plead don't hurt these trees its home to lots of animals. Think about us and the trees and the air you breathe in.

Your sincerely

The busy bee (Siloe – 5T)

Year 5 Remote Learning

History research on ancient Baghdad

Baghdad is the largest city in Iraq. It has 5,772,000 people. Baghdad is on the Tigris River. Baghdad used to be one of the largest learning centers in the world. Foundation Al-Mansur commissioned the construction of the city and it was built under the supervision of the Barmakids. Mansur believed that Baghdad was the perfect city to be the capital of the Islamic empire under the Abbasid.

Baghdad eclipsed Ctesiphon, the capital of the Persian Empire, which was located some 30Km to the Southeast.

Surrounding wall- The four wall named **Kufa**, Basra, Khurasan, Syria. This wall was surrounding by another wall with a thickness of 50m. The door was so heavy it took several men to open and close them.

Golden Gate Palace – The central square of Baghdad was Golden Gate Palace. The palace was near other mansions and officers residences. It was made with brick and marble.

Wars

Siege of Baghdad (812-813), Fourth fitna

Battle of Baghdad 946, Buyid – Hamdanid war

By Varun 5G



English – Report writing on Animals in the Rainforest

Anteaters' life



By Nihal 5G

What do anteaters eat?

Anteaters have a diet, they eat ants and termites, anteaters find it really tasty and dig into bark to catch them. They use their extremely long tongue to reach into the bark of a tree to scoop them up into their mouths to eat them.

What is anteaters' prey?

Anteater's mainly target bee's hive and most commonly termites. In captivity Anteaters can't hunt because they are being fed by someone else. They usually get fed mashed fruits and vegetables like avocados and bananas, ground beef, gruel mixes, hardboiled eggs, and small insects

How big is an anteater?

The average size of an ant eater is 1' 1" – 2' 11". The longest anteater ever recorded was: 6-8 feet (1.8-2.4 meters). The shortest ADULT anteater was just 35 centimetres long.

Where do anteaters like to live?

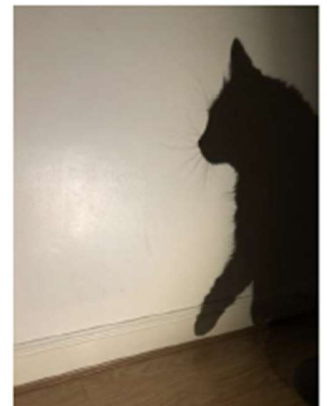
Anteaters like to stay in dry places like: dry tropical forests, rainforests, grasslands, and savannas. In that way they can get termites and other insects. Especially in rainforests it is really moist there so insects come to the surface.

Year 6 Home Learning Page

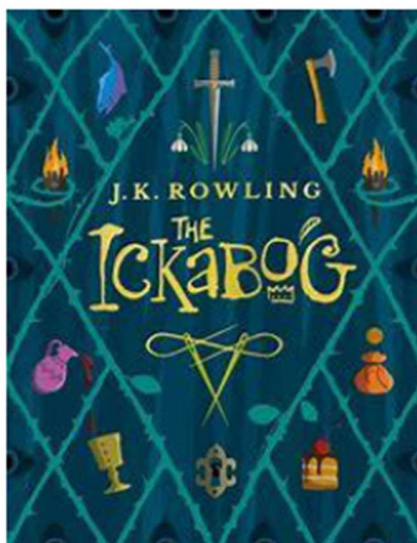


Year 6 have been exploring how a shadow is made in Science. Can you see which creature Layla, in 6B, has made with her hands? Rei in 6T not only created lots of different shadows, but even his cat got involved!

In History we have continued learning about Antarctic Explorations. Here is Sophie in 6Th's answers on what she would take and why.



What would you pack for an Antarctic adventure?		
What would you pack?	Why would you pack it?	Picture
Photo	To remember my family	
Coat	To keep me warm on my journey	
Diary	To keep track of what I do	
Flag	So I can put the flag up, once I reached South Pole	
Pencil & Paper	So I can draw, when I get bored.	
Book	So I can read in my head and learn new things	



Year group novel

Starting this week, Miss Tsenti will be reading the book 'Ickabog' by J K Rowling. You will be able to find these videos uploaded on the 'Year 6 Team'. I hope you enjoy the story!



Nathan in 2L understand how to
BE READY FOR HOME LEARNING



LIFE AFTER LOSS

How has COVID-19 changed your life?

If you are struggling to get back on your feet after having COVID-19, or dealing with the grief of losing a loved one.

We're here to help.

Citizens Advice Enfield and Mind in Enfield have partnered up to help the community recover.



IMMEDIATE EMOTIONAL SUPPORT

Coming to terms with the loss of a loved one can be incredibly difficult, dealing with this at a time of global crisis can feel completely overwhelming. If you need someone to talk to urgently- Mind in Enfield are there to support you. You will hear back from a counsellor within one working day.

FAST TRACK ACCESS TO ADVICE

COVID-19 has brought about a great deal of uncertainty for us all. It is critical that you understand your rights and entitlements. If you are having employment issues as a result of 'long COVID', or need support claiming benefits after an unexpected bereavement. Citizens Advice Enfield can offer you fast track appointments with our experts to guide you through the process.



A DEDICATED CASEWORKER

Losing a loved one or suffering a serious health event can have countless knock on effects on your life. Citizens Advice Enfield will assign you with a dedicated caseworker- who will manage your needs from start to finish.

FREE BEREAVEMENT COUNSELLING

If you are identified as needing further emotional support- Mind in Enfield can offer you up to 8 free counselling sessions with a fully-qualified grief counsellor. You are not alone.



EMERGENCY RELIEF GRANTS

If a sudden loss has plunged you into unexpected financial difficulty and you are in dire need of financial relief- Citizens Advice are offering small emergency grants of up to £500.

0300 330 1167



LIFEAFTERLOSS@MIND-IN-ENFIELD.ORG.UK
LIFEAFTERLOSS@ENFIELD.CAB.ORG.UK

Life After Loss

How has COVID-19 changed your life?

Can't afford funeral costs?

Weighed down by unexpected money problems and mounting debt?

Can't work due to COVID-19?

You are not alone.

We can help you with:

- Immediate Emotional Support
- Bereavement Counselling.
- Fasttrack access to benefit, debt and universal credit advice.
- Emergency Relief Grants of up to £500.

Feeling overwhelmed?

Struggling to cope with grief after losing a loved one?

Need to talk about how you're feeling?