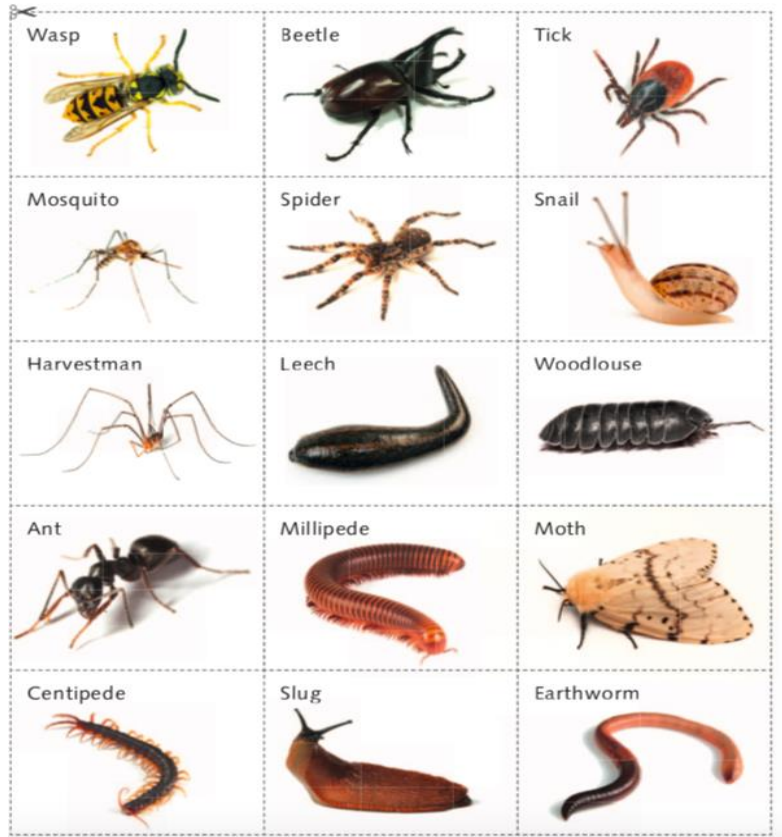


Science: Invertebrate

Starter:

- What is an invertebrate?
- What is the difference between vertebrates and invertebrates?

Sort these out using your own headings



6 jointed legs	Many segments to the body	No wings
8 jointed legs	No wings	No jointed legs
No wings	Muscular foot	1 pair of antennae
3 body parts – head, thorax, abdomen	No legs	Segmented bodies
10 or more jointed legs	2 body parts	Abdomen often has segments (usually 19)
2 body parts	More than 14 pairs of legs – each segment has 1 or 2 pairs	Usually have 2 pairs of wings
No antennae	Most have shells	No antennae
2 pairs of antennae (one may be very small)	One pair of antennae	Soft body with no segments
Usually have bristles although they may be too small to see		

Task:

Organise the cards with the characteristics of the different invertebrate groups and match them to the correct group names. You will have more than one of the same cards if it is a characteristic of more than one group.

Groups:

- insect
- Arachnids (spiders)
- Myriapods (many legs)
- Molluscs
- worms