

## Science- Classification

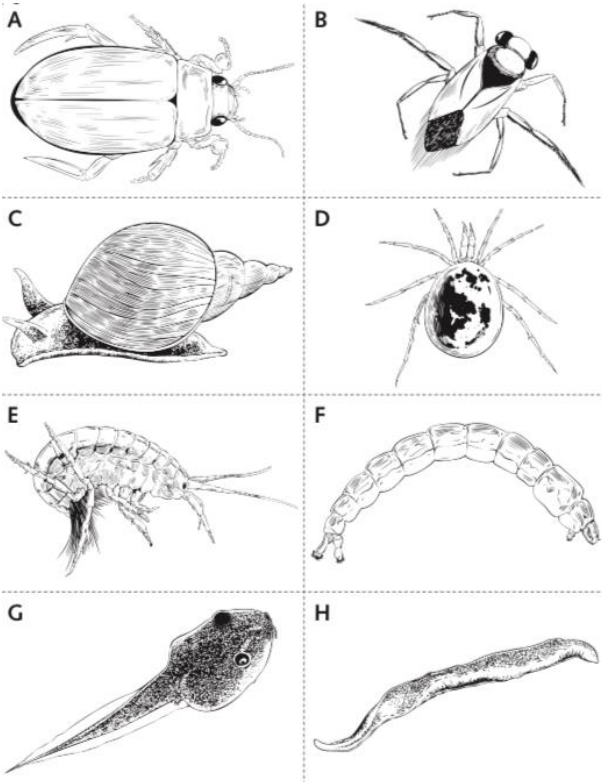
What is classification?

Video: <https://www.bbc.co.uk/bitesize/topics/zn22pv4/articles/z3nbcwx>

Please take notes on the key information on classification.

### Starter:

Use these cards to organise these mini-beasts.



Does it have legs?	Is its body large and broad?
Does it have a shell?	Is one pair of its legs much larger than the rest?
Is it really small (less than 2 mm)?	Does it have large eyes?
Does it have 6 legs?	Is it more than 50 mm long?
Does it have a tail?	Are there hairs on its legs?
Does it have 3 tails?	Does it have more than 6 legs?

**Task:**

Research and complete the fact file on each one using the information from the key.

What are the similarities and differences between the pond animals?

Animal	Name:	Image:	Important fact
A	Tadpole		
B	Pond snail		
C	Midge Larva		
D	Diving beetle		
E	Flatworm		
F	Leech		