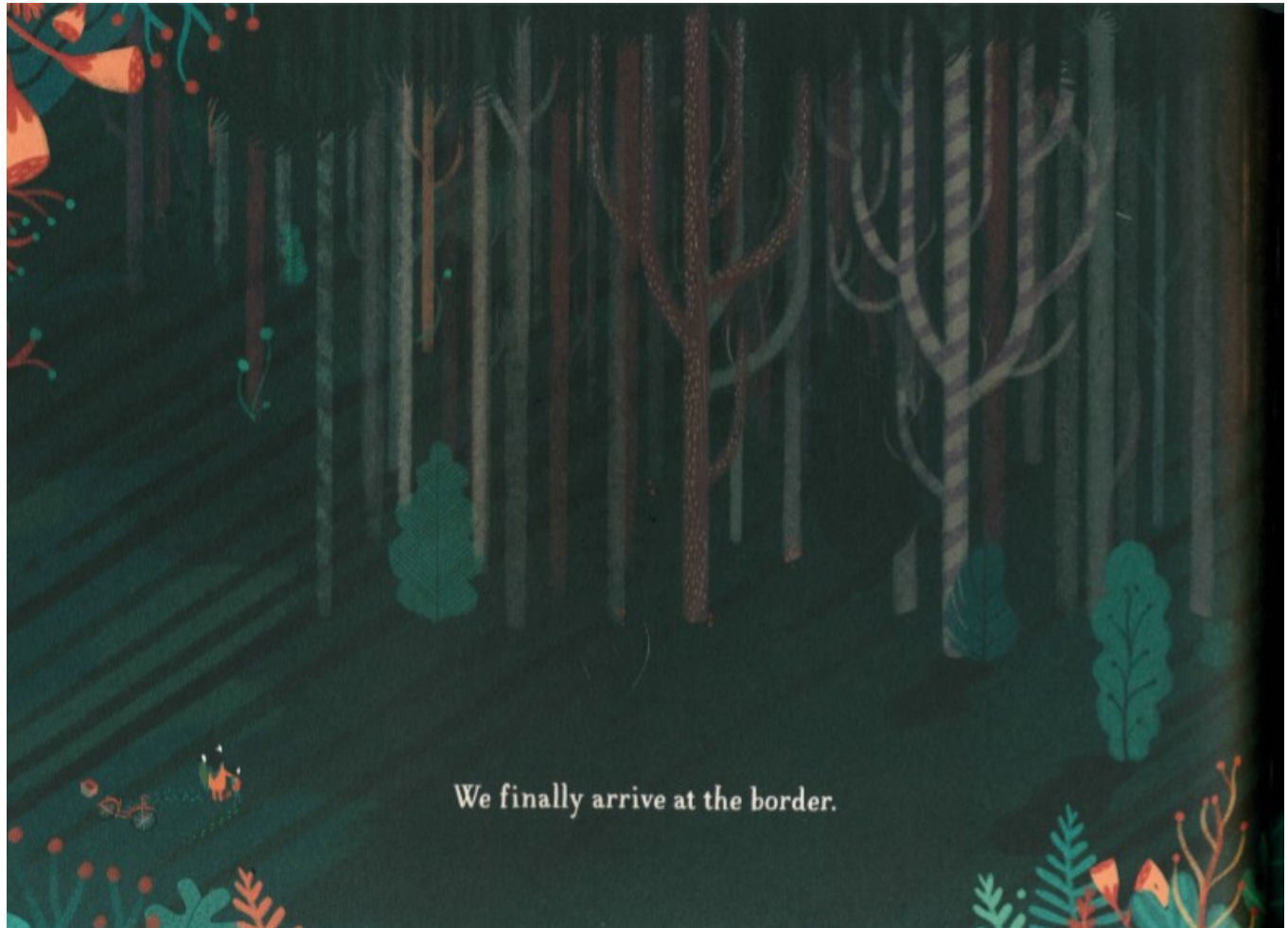


I can fill in a senses grid to talk about the feelings evoked from the illustration.

Recap on the story so far and read on a little more. Look at the attachment on the website labeled *The Journey Part 1* .

Write down words and phrases that these 2 pages evoke.





It is an enormous wall  
and we must climb over it!

Think about the way the illustrator has used colour, proportion, shapes and lines . Then draw and fill in the senses grid.

How would you feel if you were stood at the edge of the dark forest?

|   |   |
|---|---|
| <ul style="list-style-type: none"><li>• What might you see?</li></ul> | <ul style="list-style-type: none"><li>• What might you hear?</li></ul>        |
| <ul style="list-style-type: none"><li>• How might you feel?</li></ul> | <ul style="list-style-type: none"><li>• What might you be thinking?</li></ul> |