



# PRINCE OF WALES PRIMARY SCHOOL

**Newsletter**  
13<sup>th</sup> December 2019

*Listening Excellence Attitude Respect Negotiate Enjoy Responsible Support*



## 3G Fossil Hunters

Pupils in 3G learnt that Mary Anning was one of the greatest fossil hunters that ever lived. They acted out fossil hunting using brushes and magnifying glasses. They used their knowledge of stones and soil to explain that fossils would be found in sedimentary rock.

Despite her many achievements, why was Mary Anning not eligible to join the Geological Society of London and why did she not always receive full credit for her scientific contributions?

- A famous area for fossil hunters is the 'Jurassic Coast'. How long ago was the Jurassic period? What fossils might you find?
- Why can fossil hunting be a risky business?
- You can find one of the answers here:

<https://www.bbc.co.uk/bitesize/topics/zd8fv9g/articles/zf6vb82>



This RE work from Year 2 explains the story behind Hanukkah and the miracle of the candle oil that lasted 8 days.

## Brilliant Book



Sonali 4T has been learning about the ancient Greeks and the fine decorative painting on their pottery. These include repeated geometric designs, depiction of myths and culture. Sonali has been practising repeated plant patterns. Next she will make a clay pot and the challenge will be to make a pattern on a curved surface using brush and paint.



## Our Value for December is LOVE

These pupils modelled the value this week:

Irem 1To, Lillie 1K, Olivia 1T, Ayse G 2H, Christos 2A, Daniella 2T, Ajeev 3F, Rolex 3R, Tia-Laren- 3G, Alaa 4T, Benett 4F, Sultan 4H, Bel 5K, Sophie 5G, Tuana 5H, Prescillia 6L, Zarah 6B, Anish 6T



## Attendance this week

1K 88.43%	2A 96.63%	3F 92.93%	4F 89.81%	5G 93.53%	6B 99.07%
1T 86.00%	2H 87.96%	3G 89.42%	4H 96.25%	5H 88.46%	6L 95.67%
1To 76.44%	2T 93.06%	3R 92.19%	4T 91.38%	5K 83.62%	6T 96.30%

Well done to **2A and 6B** for best attendance this week.

Overall attendance since September: **94.28%** 🎉

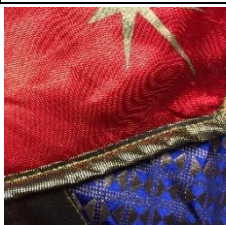
Dates for your Diary	2019/2020
Last day of Nursery	Wednesday 18 <sup>th</sup> December
Christmas Holidays	Last day Thursday 19 <sup>th</sup> December – we close at 1:30pm
Friends' Event: Cake Sale	Thursday 19 <sup>th</sup> December 1:30 - 2:00
Inset Day – school closed	Monday 6 <sup>th</sup> January
Back to School	Tuesday 7 <sup>th</sup> January 2020
Friends' Event Years 3 and 4 Disco	Friday 31 <sup>st</sup> January 4.00pm - 5.30pm
February Half Term	Monday 17 <sup>th</sup> – Friday 21 <sup>st</sup> February
Friends' Event Years 5 and 6 Disco	Friday 7 <sup>th</sup> February 4.00pm - 5.30pm
Back to School	Monday 24 <sup>th</sup> February
Football League	Thursday 27 <sup>th</sup> February - 4pm at Prince of Wales
Netball League	Tuesday 3 <sup>rd</sup> March 4.00pm and 4.30pm
Sports Relief Charity Day	Friday 13 <sup>th</sup> March
Netball League	Tuesday 31 <sup>st</sup> March 4.00pm and 4.30pm
Football League	Thursday 19 <sup>th</sup> March - 4pm at Prince of Wales
Easter Holidays	Monday 6 <sup>th</sup> April – Friday 17 <sup>th</sup> April
Back to School	Monday 20 <sup>th</sup> April
May Bank Holiday No School	Friday 8 <sup>th</sup> May
May Half Term	Monday 25 <sup>th</sup> – Friday 29 <sup>th</sup> May
Back to School	Monday 1 <sup>st</sup> June
WWF Charity Day	Friday 19 <sup>th</sup> June
Summer Holidays	Wednesday 22 <sup>nd</sup> July – Monday 31 <sup>st</sup> August

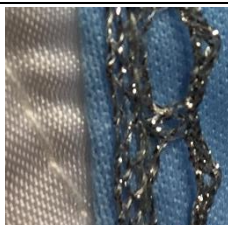
### Year 2 Nativity

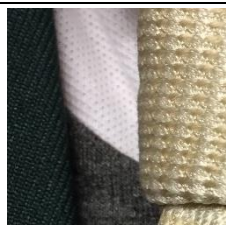
Year 2 pupils acted and sang their hearts out this week to the delight of Parents, Carers and Friends. Their Nativity story included the twist that the inns were being inspected for quality, health and safety. Thankfully the *inspectors* found the stable where Mary and Joseph stayed 'fit for a King' and give the Inn a 'star rating'.

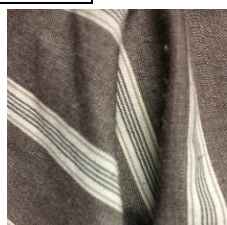
### Quiz time

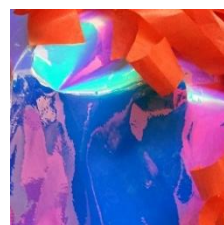
Have a look at the images below, can you identify where in the play you might come across these materials? Write the answers under each photo.







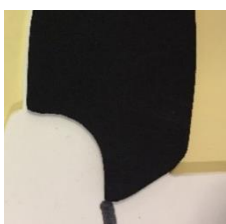













HINT: angel, crib, Mary, sheep, shepherd, star, wise men, inspector, roman soldier



# New Spring Menu

## WEEK 1

### MONDAY

British "Bangers n' Mash" (chicken) or Veggie Sausages with Garden Peas & Gravy

OR

**Vegan**  
Pasta Ravioli with Delicious Basilica Sauce

**Dessert**

Organic Yoghurt Selection

### TUESDAY

Chicken Biryani or Veggie Curry & Rice with Mini Naan Bread

OR

Hearty Jacket Potato Topped with Cheese & Beans

**Dessert**

Carrot Cake

### WEDNESDAY

Lamb Meatloaf or Quorn, Roast Potatoes, Fresh Broccoli & Carrots with Gravy

OR

Velvety Pasta Capellini with a Cheese & Chive Sauce

**Dessert**

Crumbly Cherry Flapjack

### THURSDAY

**50% Plant Protein**  
Tasty Beef or Veggie Lasagne with Homemade Garlic Bread & Italian Salad

OR

Baked Jacket Potato Loaded with Tangy Coleslaw

**Dessert**

Chocolatey Beetroot Sponge-cake with Chocolate Sauce

### FRIDAY

Classic Crispy Battered Fish or Cheesy Flan with Chips, Sweetcorn & Baked Beans

OR

**Vegan**  
Pasta Ravioli with Roasted Vegetable Sauce

**Dessert**

Ice-cream

## THEME DAYS



Chinese New Year



Pancake Day



British Pie Day

LOOK, thanks to the feedback from our pupils, Enfield catering has made changes:

You wanted curry, beef and noodles so they are back on the menu.

Also, you can now have a WHOLE jacket potato and a WHOLE banana.

Each day our children can enjoy unlimited salad and fresh bread.

A nutritious meat or vegetarian dish of the day is served with vegetables, or have something from the pasta / jacket station.

Finish it all off with a yummy dessert or fresh fruit, washed down with a glass of milk or water

## WEEK 2

### MONDAY

**50% Plant Protein**  
Meat or Veggie Burger with Homemade Wedges & Sweetcorn

OR

Velvety Pasta Capellini with a Tomato & Basil Sauce

**Dessert**

Organic Yoghurt Selection

### TUESDAY

BBQ Chicken Noodles or Veggie Singapore Noodles

OR

Hearty Jacket Potato Topped with Tuna Mayo

**Dessert**

Banana Cake

### WEDNESDAY

Roast Chicken or Quorn Fillet, Roast Potatoes, Fresh Cauliflower & Peas with Gravy

OR

Velvety Pasta Capellini with a Cheese & Chive Sauce

**Dessert**

Rice Pudding & Fruit Jam

### THURSDAY

**50% Plant Protein**  
Delicious Pasta Bolognese or Veggie Meatballs in Marinara Sauce and Rice with Homemade Focaccia & Mixed Salad

OR

Hearty Jacket Potato Topped with Cheese & Beans

**Dessert**

Apple Crumble & Custard

### FRIDAY

Lemon Crumb Salmon or Margherita Pizza with Chips, Sweetcorn or Baked Beans

OR

**Vegan**  
Pasta Ravioli with Roasted Vegetable Sauce

**Dessert**

Ice-cream

## THEME DAYS



Chinese New Year



Pancake Day



British Pie Day



Do you see how the daily salad bars will complement the main meals on offer?

The same will happen for bread. For example naan bread when there is curry and garlic bread or focaccia to go with pasta.