



# PRINCE OF WALES PRIMARY SCHOOL



CHRISTMAS BULLETIN 21st December 2016

Santa came to visit  
us in class



Dining Hall Decorations



Children enjoying  
their Christmas Dinner



Christmas Class Parties



Year 2 Nativity



Christmas Play



Christmas  
Jumpers





December is a time to think about our school value: GRATITUDE

We are grateful for ...

... mummy, daddy, baby and everything. *Nursery*

... my big box of trains to play with. *Thomas, Yellow Class*

... hugs when I am sad. *Keira, Purple Class*

... school lunches because I like the coloured trays. *Symone, Orange*

... the wrist bands Mr Bless gives us. I feel very proud. *Demi, Rainbow*

... all the presents we receive. *Class 1T*

... having clean water and food. *Esther K, Class 1K*

... the batons, certificates and golden rules that help us be gold Medal Learners. *Class 1Tr*

... spending time with our families. *Class 2A*

... the crops we can grow so we don't go hungry. *Naomi, Class 2B*

... people let us play with them and who share their toys and games. *Class 2F*

... having a home and a family, and ... think about the poor people out on the streets. *Ella A, Class 3N*

... my sister as she always helps me. *Elias, Class 3H*

... our free school Christmas lunch. *Class 3F*

... my closest friends who are always beside me. *Kyra, Class 4G*

... all the books I have to read and jobs to do that keep me busy. *Sertan, 4F*

... we are grateful for our school being the best. *Class 4K*

... the wonderful food we get, our friends and teachers and our beautiful loving school. Thank you so very much for giving us an opportunity to learn. *Amari-Lee, 5W*

... having our awesome ICT, our musical, fun steel pans, our active PE lessons. *Hamza, Class 5G*

... living in a country which is not at war and is safe. *Class 5L*

... all the people who care for us. *Darien, Class 6H*

... the courage and compassion that the teachers show us and we learn to give to others. *Shria, Class 6B*

... my family, who love, support and nurture me, as they encourage me throughout my life. *Class 6T*



Art work by Gulay Ayken, 5G – winter landscape



All Staff at Prince of Wales  
wish our school Community a  
Merry Christmas and Happy New Year



*Jokes from our Christmas Dinner crackers — does your child understand all the puns and word play?*

**It's a cracker** of a joke

Q: Why does Scrooge love Rudolph the Red-Nosed Reindeer?

A: Because every buck is dear to him.



**It's a cracker** of a joke

Q: What did the big Christmas candle say to the little candle?

A: I'm going out tonight!



**It's a cracker** of a joke

Q: Why was Santa's little helper depressed?

A: Because he had low elf esteem!



**It's a cracker** of a joke

Q: What is a mum's favourite Christmas carol?

A: Silent Night!



**It's a cracker** of a joke

Q: Mum, can I please have a cat for Christmas?

A: No. You'll have turkey the same as the rest of us!



**It's a cracker** of a joke

Q: What did Tarzan sing at Christmas time?

A: Jungle Bells!



**It's a cracker** of a joke

Q: Why did the elf push his bed into the fireplace?

A: He wanted to sleep like a log!



**It's a cracker** of a joke

Q: Why does Santa Claus go down the chimney on Christmas Eve?

A: Because it soots him!



**It's a cracker** of a joke

Q: If athletes get athlete's foot, what do astronauts get?

A: Missile toe



**It's a cracker** of a joke

Q: What do Snowmen eat for breakfast?

A: Snowflakes!



**It's a cracker** of a joke

Q: Why did the elf push his bed into the fireplace?

A: He wanted to sleep like a log!



**It's a cracker** of a joke

Q: What's red and white and red, red and white, and red and white?

A: Santa Claus rolling down a hill!



**It's a cracker** of a joke

Q: What do you get when you cross an archer with a gift-wrapper?

A: Ribbon hood!



**It's a cracker** of a joke

Q: Why do giraffes get Christmas gifts every year?

A: They are so good that they'll stick their necks out for anyone!



**It's a cracker** of a joke

Q: What do you get when you cross a Snowman with a vampire?

A: Frostbite!



**It's a cracker** of a joke

Q: Why is it always cold at Christmas?

A: Because it's Decemberrrrrr!



**It's a cracker** of a joke

Q: Which of Santa's reindeers needs to mind his manners the most?

A: "Rude"olph!



**It's a cracker** of a joke

Q: Why does Scrooge love Rudolph the Red-Nosed Reindeer?

A: Because every buck is dear to him.



**It's a cracker** of a joke

Q: What do they sing at a snowman's birthday party?

A: Freeze a jolly good fellow



**It's a cracker** of a joke

Q: What can Santa give away and still keep?

A: A cold!



**It's a cracker** of a joke

Q: What did Tarzan sing at Christmas time?

A: Jungle Bells!



**It's a cracker** of a joke

Q: What does Santa like to eat?

A: A jolly roll!



**It's a cracker** of a joke

Q: Why was Santa's little helper depressed?

A: Because he had low elf esteem!



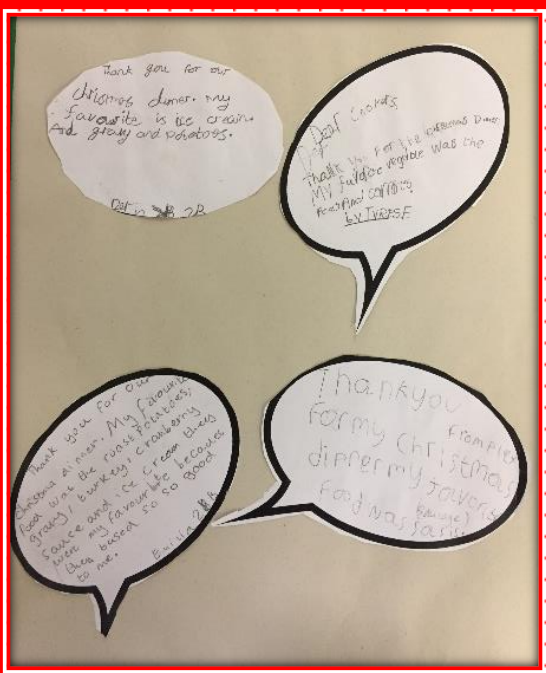
**It's a cracker** of a joke

Q: What do elves learn in school?

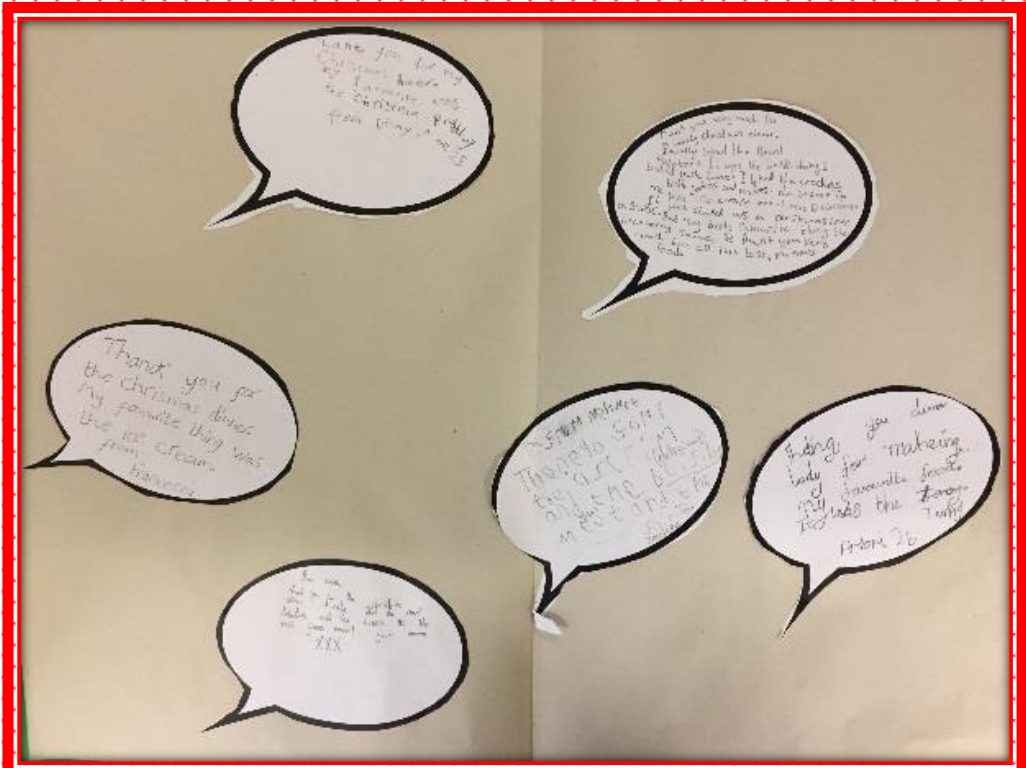
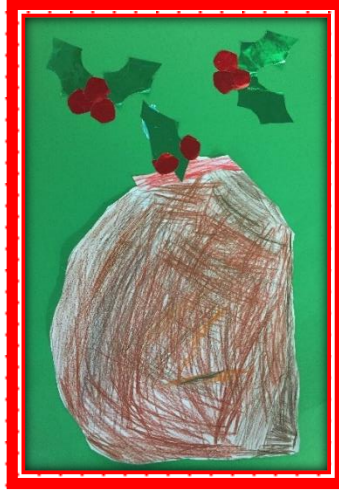
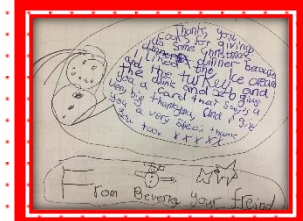
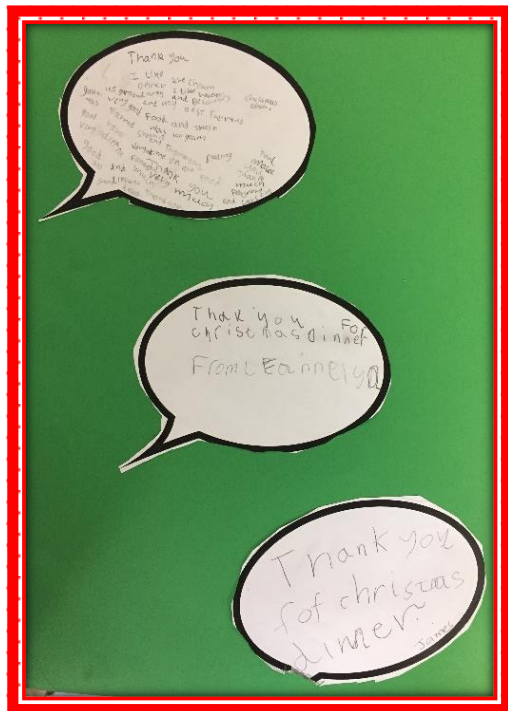
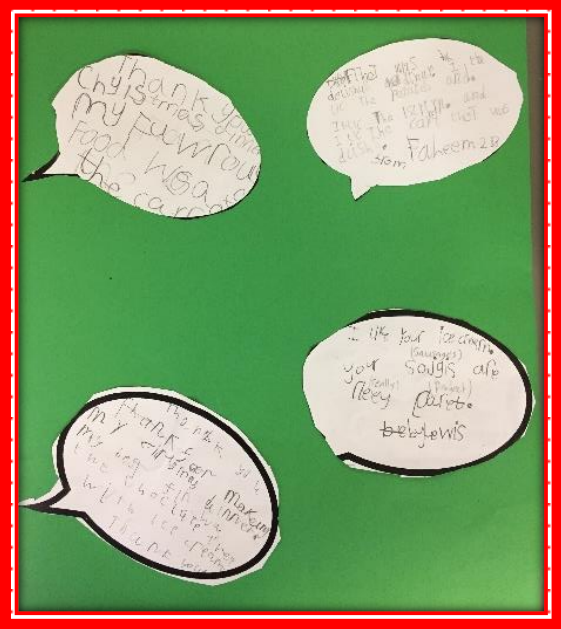
A: The Elf-abet!







With thanks to our Cook Cem and her team for our wonderful Christmas Dinner.

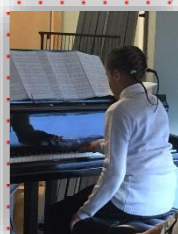






## Talent Show 2016

Well done to all who took part in this year's Talent Show; you all did an amazing job!



### Dates for your diary

Thursday 05<sup>th</sup> January 2017  
Monday 30<sup>th</sup> January 2017  
Tuesday 31<sup>st</sup> January  
Monday 13<sup>th</sup> – 17<sup>th</sup> February  
Monday 20<sup>th</sup> February  
Tuesday 7<sup>th</sup> March  
Friday 24<sup>th</sup> March  
Tuesday 28<sup>th</sup> March

Tuesday 18<sup>th</sup> April 2017  
Monday 3<sup>rd</sup> – Monday 17<sup>th</sup> April  
Monday 1<sup>st</sup> May  
Monday 29<sup>th</sup> May – 2<sup>nd</sup> June  
Monday 5<sup>th</sup> June  
Friday 21<sup>st</sup> July

Start of Spring Term  
School Nurse Drop in  
Parent Forum 9-10 am/6-7pm  
Half term  
School Nurse Drop in  
Sponsored 4 minute activities  
Red Nose Day (wear red)  
Individual photos 9.00am  
Sibling photos – 3.00 – 4.30pm  
Inset Day School Closed  
Easter Break  
May Bank Holiday  
Half Term  
Inset Day School Closed  
School finishes for Summer

