



PRINCE OF WALES PRIMARY SCHOOL



NEWSLETTER 6th May 2016

Listening Excellence Attitude Respect Negotiate Enjoy Responsible Support

Dear Parents, Governors and Friends,

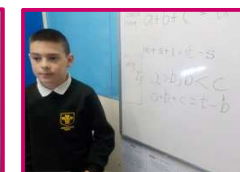
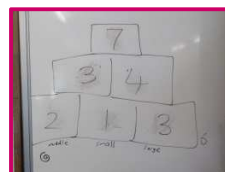
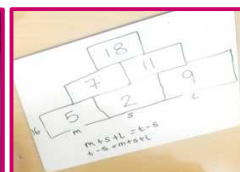
We have reached that time of the year where all Year 6 pupils will be taking part in the KS2 SATs next week. I am proud of the wonderful attitude our children have shown in their approach to these tests. I would like to thank the staff for their hard work in ensuring high quality learning has taken place. As you know, the tests this year are different and more challenging. We are confident that despite the short time many Year 6 pupils have been at our school (33% new arrivals since Year 4 alone), the results will demonstrate good progress is made by all. Join our staff and pupils in wishing Year 6 every success in demonstrating their knowledge, understanding and skills next week.

Jan Bless, Headteacher

What Mrs Tootill saw this week in 6T

Children learn best when challenged and algebra gives that in bucket loads. Everyone got stuck in, but Naoum showed some particularly great mental agility. I'll let him explain:

In class 6T we were faced with an investigation called 'The Brick Wall'. We had to solve missing numbers and express these problems algebraically. I began by using simple numbers, adding them together to complete the wall. I then swapped the numbers for colours and finally swapped to letters to help me transfer my understanding. I enjoyed the process and found trying to disprove someone's formula a fun challenge! I was the person in our class that found the algebraic formula by linking new learning and previous knowledge to express my reasoning. Naoum 6T



Our Value for this month is Creativity

This month the children will explore the **Value of 'Creativity'**. This links to the **British Value of 'Individual Liberty'**. The children are able to make 'choices' to be creative in all aspects of the curriculum, for example, Art, Music, PE, English and choice of reading book. This freedom to make choices, also links to the **British Value of 'Mutual Respect'**. The children are encouraged to express their creative style, pupil voice and individuality, they are also encouraged to be thoughtful and respectful towards other children's work and experiences.

Mrs Stylli, PSHE and Values Co-ordinator

These pupils modelled the value of creativity this week; Arbri 1T, Arian 1A, Cid 1K, Anshika 2Ru, Dejeane 2A, Myah 2Ri, Eliot 3N, Simay 3F, Troiquon 3G, Artin 4H, Eyem 4F, Merdan 4L, Ayse 5L, Joseph 5S, Cruz 6T, Reegan 6B, Serol 6H

Attendance this week

1A 83.93%	2A 95.83%	3F 97.32%	4F 93.10%	5L 92.92%	6B 100.00%
1K 98.21%	2Ri 96.25%	3G 98.71%	4H 91.96%	5S 93.75%	6H 95.98%
1T 91.38%	2Ru 93.75%	3N 97.08%	4L 96.67%		6T 99.11%

Well done to **3G** & **6B** for best attendance this week.

School Target: 95.5%

Overall attendance since September: **95.2%**



Year 1

Science Corner

This term in Science, Year 1 are learning about **Plants**.

This week we had lots of fun going on a search looking for flowers outside and exploring pictures of flowers. We also really enjoyed working as a team to sort the flowers we collected into various groups and making a collage. We found out that there are lots of different types of flowers; they come in many shapes, colours and sizes.



Our Local Environment

Year 4 have been learning about how humans impact on the global and local environment. As part of this we investigated how much litter has been dropped on our school field. We wore gloves to pick up the litter, and kept a tally of all the litter we found. Between the three classes we collected six large bags of rubbish including bits of plastic, sweet wrappers, plastic bottles and cans.



Year 4 visit to St George's Church, Freezywater. We went to St George's Church to continue our learning on Christianity. Father Taemin explained all the different areas of the church and we looked at the font, the Book of Remembrance and the High Altar.

I learnt that when you first enter a church there is a font for baptism. My favourite part was the tour around the church. Culaay 4H
There was a part called the Lady Chapel which was blue, which meant it was for remembering Mary, Mother of Jesus. I enjoyed visiting the church. Leila 4F

The vicar talked about baptism and then we got to explore the church. It was lots of fun. Bintou 4L

Year 6 SATs week - 9-12 May 2016

Children in year 6 will be taking their SATs tests next week. Year 6 parents, please do not make any appointments for your child during this week. If your child is feeling unwell during SATs week, **please still bring them in to school** and we can advise you what to do. Please ensure your children attend the daily breakfast at 8am that will then lead to revision and warm-up sessions before each test. After school drop-in sessions for Year 6 pupils will continue until Wednesday. Find out more about the national tests on our website:

<http://www.princeofwales.enfield.sch.uk/school-curriculum/assessment-data/end-of-key-stage-1-and-2-tests/>

Dates for your diary

Value for May: Creativity

w/c 9th May
 w/c 16th May
 Wednesday 25th May
 30th May-3rd June
 w/c 13th June
 Monday 13th June
 20-23 June
 Thursday 23rd June
 Wednesday 6th July
 Friday 8th July

Tuesday 12th July
 Friday 22nd July
 Monday 5th September

Year 6 test week
 Year 2 test week
 Book swap shop
 Half Term Holidays
 Phonics test week
 Year 5 visit to The Barbican for a concert
 Year 6 School Journey
 EU referendum – school closed for polling
 Year 5 Partnership Singing Festival at Eastfield - morning
 Final school day for Nursery
 End of year reports to parents
 Parents' Evening
 School breaks up for summer break at 1:30pm
 Start of school year '16/'17

BEST CLASS OUT OF CLASS

Thank you to class **4L** for being a good role model this week.

