



# PRINCE OF WALES PRIMARY SCHOOL



NEWSBULLETIN 24<sup>TH</sup> March 2017

*Listening Excellence Attitude Respect Negotiate Enjoy Responsible Support*

## Also in this bulletin:

- New Easter Bonnet Parade
- Let's Talk Education
- Keep your child safe online – training for parents
- Be aware of the increase in price of school lunches
- Family photo sessions at PoW
- We need more, large plastic bottles
- Find out about the services at our Children's Centre
- Information about the benefit cap
- Diary dates
- Parking in Salisbury Road
- Easter holiday cycling training



After the recent events in central London, let's consider this:

YOU MUST NOT LOSE FAITH IN HUMANITY.

Humanity is an ocean; if a few drops of the ocean are dirty, the entire ocean does not become dirty.

MAHATMA GANDHI

## The Friends of Prince of Wales' Mothers' Day Breakfast

**Reception to Year 2** on Monday 27th March

**Year 3 to Year 6** on Tuesday 28th March in the Community Room at 8am prompt.

This event is for any mother or female relative/carer who looks after a child in our school.

You will receive breakfast of either a hot cross bun or a croissant. There is an activity that you can do together and a surprise for your adult at the end.

**Please respond as soon as you can.** If you lose your invitation, then please put your name on an envelope with your £2 so that we know how many will be attending. There will be a Father's Day Breakfast in June so there won't be any relatives that will miss out. We look forward to seeing you and celebrating Mother's Day with you.



Our Value for March is **Curiosity**. These pupils modelled the value this week:

Kayden 1T, Binyameen 1Tr, Riomario 1K, Jaleel 2F, Abdirahman 2A, Cyanna 2B, Deniz 3F, Bejna 3H, Angelina 3N, Ibrahim 4G, Finley 4F, Adam 4K, Emily 5L, Cristiano 5G, Amber 5W, Yusuf 6T, Ethan 6B, Akasya 6H



## Attendance this week

1K 96.15%	2A 98.00%	3F 93.79%	4F 96.33%	5G 96.00%	6B 97.00%
1T 97.41%	2B 97.67%	3H 97.33%	4G 96.21%	5L 97.93%	6H 96.67%
1Tr 93.24%	2F 97.33%	3N 93.33%	4K 97.93%	5W 93.67%	6T 96.50%

Well done to **2A, 4K & 5L** for best attendance this week.

Overall attendance since September: **95.25%**

**How to keep your child safe online on Thursday 30<sup>th</sup> March at 10.30am to 11.30 am at Community House.**

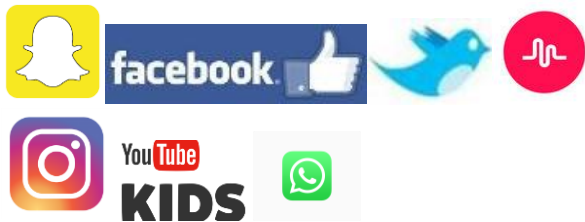
The training will be delivered by NSPCC (National Society for the Prevention of Cruelty to Children).

At this training, parents will get information about safeguarding what children are searching for online, who they are talking to or what they are seeing.

Innocent searches sometimes reveal not so innocent results. Parental controls can be used to block upsetting or harmful content, control in-app purchases or manage how long your child spends online. The good news is that parental controls are really easy to set up. It's simple to get started. Along with talking to the child regularly, using parental controls is one of the best ways to help keep children safe online.

**To book your place, please call 020 8373 6273 or email [enquiries@epandc.org.uk](mailto:enquiries@epandc.org.uk)**

Thank you very much.



Dear Parents,

**Let's Talk Education - An invitation to Enfield Parents and Parent Governors: Wednesday 29<sup>th</sup> March 2017 at Broomfield School**

I am writing to invite you to a meeting with fellow parents and some of our head teachers to discuss the funding crisis that Enfield's schools are currently facing in the light of ongoing cuts.

I have real concerns that if no positive action is taken by Government to support our schools now that we face a situation where the achievements and outcomes for our children will be severely jeopardised.

In partnership with our schools, we are seeking to generate a local community response to Government from Enfield to help highlight our concerns. I hope that if we can harness our collective voice we can urge Government to consider how best to sustainably fund schools and ensure a brighter future for all our children.

I am intending to hold two meetings either side of the Easter Break with parents and parent governors, one in the north and one in the south of the borough.

The first of these will be held in the south of the borough at **Broomfield School (Main Hall), Wilmer Way, Arnos Grove, London N14 7HY on Wednesday 29<sup>th</sup> March 2017 at 6pm**. The meetings will allow parents to come together and discuss the issues facing our schools with a panel of local head teachers who can help us understand the impact of the changes to schools provision in the borough.

We have also extended the invitation to our local MPs who we hope will be able to make the sessions and take the opportunity to hear first-hand of the challenge facing our schools and parents in the borough.

Details of a second meeting to be held in the north of the borough shortly after the Easter Break in April 2017 will be circulated to you as soon as they are finalised.

I do hope you can attend one of the meetings to help us ensure that Enfield's voice is heard on this matter of critical importance to all our children's futures.

Yours sincerely

**Cllr Ayfer Orhan  
Cabinet Member for Education, Children's Services & Protection  
Enfield Council**

## *Easter Bonnet Parade*

*Thursday 20<sup>th</sup> April at 2:30pm* with a

# *TWIST*

This year, we challenge our pupils to design their bonnet or hat after a special theme:

Nursery and Reception: Repeated patterns

Year 1: Space and aliens

Year 2: Maths – patterns, sequences, colour and shape

Year 3: Plants and flowers

Year 4: Maths - symmetry

Year 5: Science – life cycle of an animal - *preferably linked to Easter*

Year 6: International theme – *i.e. 'Easter celebrations around the world'*

## Increase in price of school meals



From 1<sup>st</sup> April 2017 we will be increasing the price of a school meal to £2.30. The actual cost of the meal is £2.50 which we pay to the Local Authority for each meal, meaning we have been subsidising each meal by 45p. Unfortunately, due to budget cuts we are no longer able to subsidise meals by so much. As this money comes directly out of the school budget it means we have fewer funds to purchase resources etc. for your child's education. School meals continue to be value for money and our head cook and her team continue to offer a varied, tasty and well balanced meal every day.

Please ask at the school office if you feel you may be eligible for free school meals, even if your child is in Reception or Years 1 or 2 as you can still register your eligibility which will mean when your child reaches Year 3 you will not need to apply again, so everything will be in place. Please also note that if you register your child and are eligible, then the school will receive additional funding under the 'Pupil Premium' grant to assist us in purchasing resources and employing staff for interventions.

**Tuesday 28<sup>th</sup> March Individual Photos will be taken during the school day and siblings after school until 4.30pm in the square hall.**



## Invite you to a Family Photo Session at Prince of Wales Primary School

**On Tuesday 28th March  
Afterschool til 4:30pm**

This is your opportunity for any **siblings** and/or family members, to have their photographs taken.

\*\*\* Please Note: Siblings will **NOT** be photographed during the School day \*\*\*

## BOTTLE GREENHOUSE



Please could you continue to send in clean, round 2 litre plastic bottles so that we can complete the construction of our bottle greenhouse. Bottles can be any colour but **MUST** be round. We hope some children will be involved in the threading of bottles onto canes which form the walls of the greenhouse. We hope to get this project completed by early in the summer term and you will be able to see the results as you drop off and pick up your children. Thank you for your help.



**Norse Nose**



**Snootankhamun**



**Sneezecake**



**The Snorcerer**



**Frankinose**



**Dr. Nose**



**Nose-it-all**



**Snuffles**



**Sniffer**



**DJ Boogie**



# Would you like to be a **SCHOOL APPEAL PANEL MEMBER?**

**Enfield Council is looking for Lay and Education Panel members to sit on our School Appeal Hearings.**

## **What would I be doing?**

You would be sitting on a panel with 2 or 4 other members making a balanced decision on whether to allow or refuse a parent's appeal against a decision not to offer their child a place at their preferred school.

## **Who is a Lay person?**

A lay person is someone without any experience in education.

Examples of Lay members are any member of the public or someone who has not worked in any school in a paid capacity.

## **Who is an Education person?**

An education person is someone who has experience in education or the management of a school.

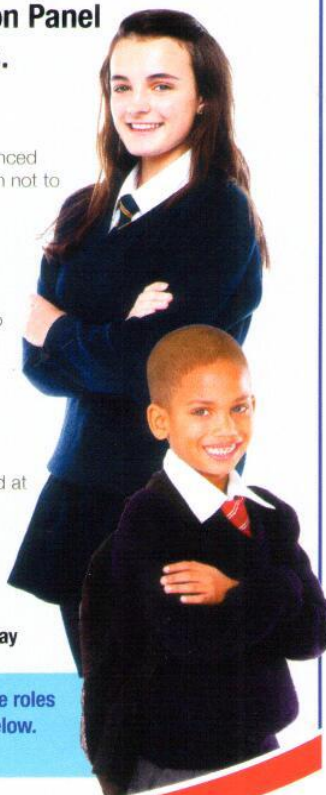
Examples of Education members are: parents of pupils currently registered at a school; Teachers; Governors or Head teachers.

**Where?** Enfield Civic Centre

**When?** Term time only (Monday to Friday)

**Why?** To ensure all appeals are conducted in a fair and transparent way

**If you think this is for you and you would like more information about the roles and how to become a panel member, please contact us on the details below. Sufficient training will be provided before sitting on panels.**



# **Are you an experienced SEN professional?** **Would you like to be a part of a School Exclusion Review Hearing?**



**Enfield Council is looking for volunteers who are experienced SEN professionals to sit in and give their professional view on our independent review hearings for school exclusions.**

## **What would I be doing?**

The main duties of an SEN Expert would be to:

- Read and consider a pupil's file in relation to their School Exclusion Review
- Provide an expert view to inform the panel on how SEN might be relevant to a pupil's exclusion

**Where?** Enfield Civic Centre

**When?** Term time only (Monday to Friday)

**If you think this is for you and you would like more information about the role and how to become a SEN expert within the review process, please contact us on the details below. Sufficient training will be provided before sitting on panels.**

Email: [sai@enfield.gov.uk](mailto:sai@enfield.gov.uk)  
Telephone: 020 8379 3411 / 3422

[www.enfield.gov.uk](http://www.enfield.gov.uk)



Email: [sai@enfield.gov.uk](mailto:sai@enfield.gov.uk)  
Telephone: 020 8379 3411 / 3422

[www.enfield.gov.uk](http://www.enfield.gov.uk)





Norse Nose



Snootankhamun



Sneezecake



The Snorcerer



Frankinose



Dr. Nose



Nose-it-all



Snuffles



Sniffer



DJ Boogie



## Enfield Children's Centre at Prince of Wales - Hazelbury Hub

Contact No.  
Term Time only  
020 8886 8217

	MONDAY		TUESDAY		WEDNESDAY		THURSDAY		FRIDAY	
	AM	PM	AM	PM	AM	PM	AM	PM	AM	
<b>PRINCE OF WALES</b> Community room Salisbury Road Enfield EN3 6HG Outreach Worker: Kerry 07415465633	9 – 10:30 <b>STAY &amp; PLAY</b> CHILD TALK 0-5 yrs <b>Not the 2<sup>nd</sup> Monday of the month.</b> 9:15-11:00 SPEECH & LANGUAGE DROP IN 13.03.17 10.04.17	1:30.3pm <b>STAY &amp; PLAY</b> TODDLER TALK 1-2 year olds	9 – 10:30 <b>STAY &amp; PLAY</b> TODDLER TALK 1-2 yrs FIRST TIME <u>PARENTS</u> Invite only	1:30 – 3 <b>TALK-ACTIVITY</b> 18 mths- 2½yrs <u>INVITE ONLY</u>	9-11am <b>STAY &amp; PLAY</b> BABY TALK 0-1 yrs		Family Learning 830-12.30			
	9-4pm 2 year checks	9-4pm 2 year checks	9-3pm Midwives		9 – 11am HEALTH VISITOR & WELL BABY CLINIC DROP IN		9-1pm 1 year development reviews			
	<u>SALT Drop in</u> 915-11 2 <sup>nd</sup> <u>og the month</u> Outreach	<u>Outreach</u>	<u>Outreach</u> 9 – 11:30 <b>ONE STOP SHOP</b> Come and see your outreach worker for advice and support	<u>Outreach</u>	<u>Outreach</u> 9:15-10:45 Breastfeeding Support		Family Learning T68.30-12.30			





<p><b>Play and Communication</b></p> <p>All families who attend the Baby, Toddler or Child Talk will have the opportunity to be involved in their child's learning and development. Each child will be assessed to see how they are developing with a focus on language and if your child is seen as needing support, our trained team will be able to recommend and access appropriate groups to support you and your child.</p>	<p><b>Baby Talk</b></p> <p>For first time parents with babies aged 0 to 12 months.</p> <p>Baby talk combines an interactive play session, stories and songs and support on health issues such as baby weighing, advice on breastfeeding, weaning, and healthy snacks</p>	<p><b>Toddler Talk</b></p> <p>For children aged 1 to 2 years' old</p> <p>This session is a mixture of play and Communication focused strategies. It combines an interactive play session, stories and songs, advice and support on health queries and preparing children for those transitions such as nursery</p>	<p><b>Child Talk</b></p> <p>For children aged 0-5 years old</p> <p>For families who have children starting nursery or school within the next 12 months. Child Talk is a mixture of play and communication focused strategies. It combines an interactive play session, stories and songs, advice and support on health queries</p>
<p><b>Talk Activity</b></p> <p>Talk Activity is aimed at supporting parents in developing their child's early language and communication skills. It is aimed at families with children aged 18 months to 2½ years. Sessions are focused on introducing communication strategies each week and supporting families to use these in the session and at home.</p>	<p><b>Speech &amp; Language (Drop-in and sessions)</b></p> <p>An opportunity for you to come along to the Centre and discuss any concerns you have about your child's speech development. Sessions are also run if you are referred into the service for support.</p>	<p><b>Ante Natal Appointments (Invitation only)</b></p> <p>Antenatal appointments are booked through your midwife. They are a chance for parents to speak to a midwife about any worries in relation to their pregnancy and check baby's growth as well as monitor their own wellbeing.</p>	<p><b>Post Natal Appointments (Invitation only)</b></p> <p>Post Natal appointments are booked through your midwife. Post Natal checks happen before you are then discharged into the care of your local Health Visiting Team and the wellbeing clinic.</p>
<p><b>Parent lead stay &amp; play</b></p> <p><b>DOING IT FOR THEMSELVES</b></p> <p>Parent lead stay and play sessions for parents and children's to share experiences meet and new friends'</p> <p>Facilitated by a team of trained volunteers.</p>	<p><b>Health Visitor &amp; Well Baby Clinic</b></p> <p>Weekly weighing sessions to see how your child is developing with health visiting staff available to answer your questions.</p>	<p><b>Development Reviews (Invitation only)</b></p> <p>Early Year's Practitioner-led session to check your Child's Development at age 1 &amp; 2 years old.</p>	<p><b>CAMHS Time to Listen</b></p> <p>Would you like to talk to our therapist about your child's development and behaviour? This is a FREE and confidential service. Please call the Centre to book an appointment or for further information</p>
<p><b>ESOL</b></p> <p>ESOL classes offer parents the opportunity to improve your English. ESOL communication skills can consist of speaking, listening, reading and understanding. Different levels available at different children's Centre's.</p>	<p><b>"One Stop Shop"</b></p> <p>The Outreach workers are available to discuss any issues parents may be facing and signpost them into the correct services. Outreach also support parents to complete forms such as school, nursery and Terrific Twos applications.</p>	<p><b>Outreach in the Community/Clinic</b></p> <p>The outreach team will be out in the community or in the wellbeing clinic, providing support for families with information on all aspects of parenting and what services are available in the local area.</p>	<p><b>Citizens Advice Bureau (CAB) (Pre-booking)</b></p> <p>A trained adviser will be available to provide one-to-one consultations covering Housing, Welfare Benefits and Debt advice</p>

# BENEFIT CAP

Changes to the Benefit Cap from 7 November 2016

**Your Housing Benefit or Universal Credit could be reduced – it is important that you ensure you can pay your rent.**

Since April 2013 there has been a limit on the amount of working age benefits you can get. This means that if the total amount of working age benefits you and your partner receive is more than the cap level, your Housing Benefit or Universal Credit will be reduced. You will still need to pay your rent not covered by benefits from your own income.

## How is the Benefit Cap level changing?

From 7 November 2016 the Benefit Cap limit will be lowered.

Household	Existing Benefit Cap level	Benefit Cap level from 7 November 2016*
Couples with or without children	£500 per week	£442.31 per week
Single people with children	£500 per week	£442.31 per week
Single people without children	£350 per week	£296.35 per week

*\*If the lower Benefit Cap level affects you for the first time, this will start from 9 January 2017.*

## Which benefits count towards the Benefit Cap?

The following benefits will be taken into account when working out the Benefit Cap:

- Bereavement Allowance
- Child Benefit
- Child Tax Credit
- Employment and Support Allowance (ESA) (contribution-based and income-based) except where the support component has been awarded
- Housing Benefit
- Incapacity Benefit
- Income Support
- Jobseeker's Allowance (contribution-based and income-based)
- Maternity Allowance
- Severe Disablement Allowance
- Widowed Parent's Allowance
- Universal Credit
- Carer's Allowance (excluded from 7 November 2016)
- Guardian's Allowance (excluded from 7 November 2016).



**The Snorcerer**



## Traffic in Salisbury Road

The parking situation pictured here in Salisbury Road is a daily occurrence. Undoubtedly this is frustrating to drivers let alone residents and the danger some manoeuvring poses to pedestrians.

Our school has repeatedly highlighted the issue of parking and congestion to authorities, but the only way this can get resolved is for parents to leave their cars at home and walk or use public transport.

Apparently, there is ample parking on the south side of the school, which means accessing the school playground through the field entrance. Please consider this as an alternative.

Also consider, if there were an emergency in this period, how would we get services to attend on time?

## Dates for your diary

Monday 27<sup>th</sup> March  
 Monday 27<sup>th</sup> March  
 Monday 27<sup>th</sup> March  
 Tuesday 28<sup>th</sup> March  
 Tuesday 28<sup>th</sup> March  
 Tuesday 28<sup>th</sup> March

Thursday 30<sup>th</sup> March  
 Monday 3<sup>rd</sup> – Monday 17<sup>th</sup> April  
 Tuesday 18<sup>th</sup> April  
 Wednesday 19<sup>th</sup> April  
 Thursday 20<sup>th</sup> April  
 Monday 1<sup>st</sup> May  
 Friday 26<sup>th</sup> May  
 Monday 29<sup>th</sup> May – 2<sup>nd</sup> June  
 Monday 5<sup>th</sup> June  
 Monday 12<sup>th</sup> June  
 Wednesday 21<sup>st</sup> June  
 Friday 21<sup>st</sup> July

Reception – Yr2 Mother's Day Breakfast in the community room  
 Year 4 Barbican trip  
 Parent Consultations evening – every year group **except** Year 4  
 Year 3-6 Mother's Day breakfast in the community room  
 Year4 Ukulele concert in the community room  
 Individual photos  
 Sibling photos - **After school until 4.30pm**  
 Dance Festival  
 Easter Break  
 Inset day School Closed  
 Start of the Summer term  
 Easter Bonnet Parade – 2:30 in the playground  
 May Bank Holiday  
 Year 3 Country side estate trip  
 Half Term  
 Inset Day School Closed  
 Year 6 Residential school journey  
 District sports 2-4.30pm  
 School finishes for Summer





Cycle Enfield are once again offering FREE Easter holiday cycle training for various age groups Monday 10<sup>th</sup> April – Thursday 13<sup>th</sup> April. This is the only opportunity for younger children (age 4-9) to receive training. Please could you help us to get the word out by putting this in your newsletters/ on your websites or let parents know this will be available. Training can be booked here: <http://www.cycleconfident.com/sponsors/enfield/>

**Where: Russet House School**

**Booking restriction: Live, work or study in Enfield**

**Price: Free**

**Schedule:**

Monday 10<sup>th</sup> April

9 - 10:45 Complete beginners

11 - 12:45 Complete beginners

13:30 - 15:15 L1 off road training

Tuesday 11<sup>th</sup> April

9 - 10:45 Complete beginners

11 - 12:45 Complete beginners

13:30 - 15:15 L1 off road training

Wednesday 12<sup>th</sup> April

9 - 10:45 Complete beginners

11 - 12:45 Complete beginners

13:30 - 15:15 L1 off road training

Thursday 13<sup>th</sup> April

9 - 10:45 Complete beginners

11 - 12:45 Complete beginners

13:30 - 15:15 L1 off road training